

## Product datasheet for **AP55778PU-N**

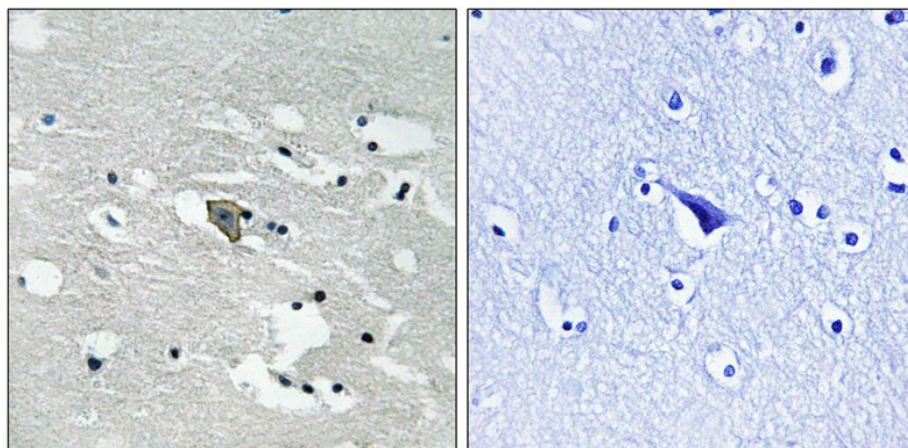
### VEGF Receptor 1 (FLT1) pTyr1048 Rabbit Polyclonal Antibody

#### Product data:

Product Type:	Primary Antibodies
Applications:	IHC
Recommended Dilution:	<b>Immunohistochemistry on paraffin sections:</b> 1:50~1:100 .
Reactivity:	Human, Mouse, Rat
Host:	Rabbit
Clonality:	Polyclonal
Immunogen:	Peptide sequence around phosphorylation site of tyrosine 1048 (D-I-Y(p)-K-N) derived from Human VEGFR1 (KLH-conjugated)
Specificity:	The antibody detects endogenous levels of VEGFR1 only when phosphorylated at tyrosine 1048.
Formulation:	Rabbit IgG in phosphate buffered saline (without Mg <sup>2+</sup> and Ca <sup>2+</sup> ), pH 7.4, 150mM NaCl, 0.02% sodium azide and 50% glycerol State: Aff - Purified State: Liquid Ig fraction
Concentration:	lot specific
Purification:	Affinity chromatography using epitope-specific peptide
Conjugation:	Unconjugated
Storage:	Upon receipt, store undiluted (in aliquots) at -20°C. Avoid repeated freezing and thawing.
Stability:	Shelf life: one year from despatch.
Predicted Protein Size:	150 kDa
Gene Name:	fms related tyrosine kinase 1
Database Link:	<a href="#">Entrez Gene 2321 Human P17948</a>
Background:	Receptor for VEGF, VEGFB and PGF. Has a tyrosine-protein kinase activity. The VEGF-kinase ligand/receptor signaling system plays a key role in vascular development and regulation of vascular permeability. Isoform SFlt1 may have an inhibitory role in angiogenesis.
Synonyms:	VEGFR1, FLT1, FLT, FRT, VEGF Receptor 1



[View online »](#)

**Product images:**

Immunohistochemical analysis of paraffin-embedded human brain tissue using VEGFR1 (Phospho-Tyr1048) antibody (left) or the same antibody preincubated with blocking peptide (right).