

## Product datasheet for **AP55774PU-S**

### STK39 pSer311 Rabbit Polyclonal Antibody

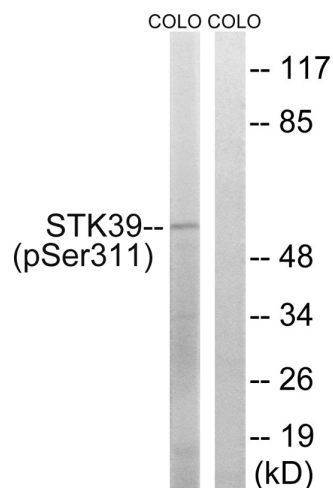
#### Product data:

Product Type:	Primary Antibodies
Applications:	IHC, WB
Recommended Dilution:	<b>Western blot:</b> 1:500~1:1000. <b>Immunohistochemistry on paraffin sections:</b> 1:50~1:100.
Reactivity:	Human, Mouse, Rat
Host:	Rabbit
Clonality:	Polyclonal
Immunogen:	Peptide sequence around phosphorylation site of Serine 311(S-F-R(p)-K-L) derived from Human STK39 (KLH-conjugated)
Specificity:	The antibody detects endogenous levels of STK39 only when phosphorylated at serine 311.
Formulation:	Rabbit IgG in phosphate buffered saline (without Mg <sup>2+</sup> and Ca <sup>2+</sup> ), pH 7.4, 150mM NaCl, 0.02% sodium azide and 50% glycerol State: Aff - Purified State: Liquid Ig fraction
Concentration:	lot specific
Purification:	Affinity chromatography using epitope-specific peptide
Conjugation:	Unconjugated
Storage:	Upon receipt, store undiluted (in aliquots) at -20°C. Avoid repeated freezing and thawing.
Stability:	Shelf life: one year from despatch.
Predicted Protein Size:	60 kDa
Gene Name:	serine/threonine kinase 39
Database Link:	<a href="#">Entrez Gene 27347 Human Q9UEW8</a>
Background:	May act as a mediator of stress-activated signals.
Synonyms:	Ste-20-related kinase, DCHT

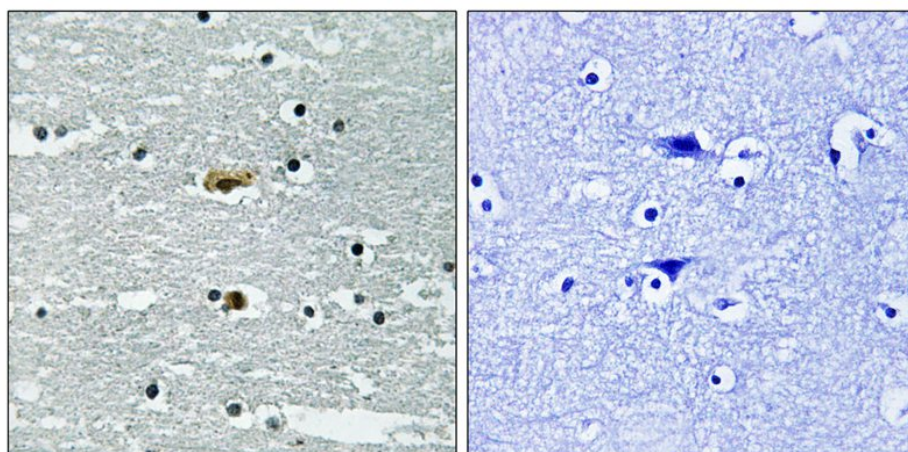


[View online »](#)

Product images:



Western blot analysis of extracts from COLO cells using STK39 (Phospho-Ser311) Antibody. The lane on the right is treated with the antigen-specific peptide.



Immunohistochemical analysis of paraffin-embedded human brain tissue using STK39 (Phospho-Ser311) Antibody (left) or the same antibody preincubated with blocking peptide (right).