

Product datasheet for **AP55773PU-S**

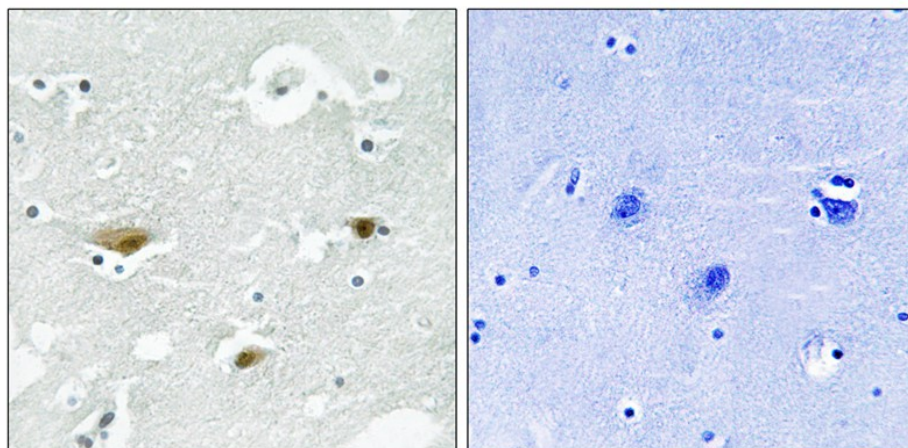
STK39 pSer325 Rabbit Polyclonal Antibody

Product data:

Product Type:	Primary Antibodies
Applications:	IHC
Recommended Dilution:	Immunohistochemistry on paraffin sections: 1:50~1:100 .
Reactivity:	Human, Mouse, Rat
Host:	Rabbit
Clonality:	Polyclonal
Immunogen:	Peptide sequence around phosphorylation site of Serine 325(S-K-R(p)-R-T) derived from Human STK39 (KLH-conjugated)
Specificity:	The antibody detects endogenous levels of STK39 only when phosphorylated at serine 325.
Formulation:	Rabbit IgG in phosphate buffered saline (without Mg ²⁺ and Ca ²⁺), pH 7.4, 150mM NaCl, 0.02% sodium azide and 50% glycerol State: Aff - Purified State: Liquid Ig fraction
Concentration:	lot specific
Purification:	Affinity chromatography using epitope-specific peptide
Conjugation:	Unconjugated
Storage:	Upon receipt, store undiluted (in aliquots) at -20°C. Avoid repeated freezing and thawing.
Stability:	Shelf life: one year from despatch.
Predicted Protein Size:	73 kDa
Gene Name:	serine/threonine kinase 39
Database Link:	Entrez Gene 27347 Human Q9UEW8
Background:	May act as a mediator of stress-activated signals.
Synonyms:	Ste-20-related kinase, DCHT



[View online »](#)

Product images:

Immunohistochemical analysis of paraffin-embedded human brain tissue using STK39 (Phospho-Ser325) Antibody (left) or the same antibody preincubated with blocking peptide (right).