

Product datasheet for **AP55770PU-N**

PAK2 pSer197 Rabbit Polyclonal Antibody

Product data:

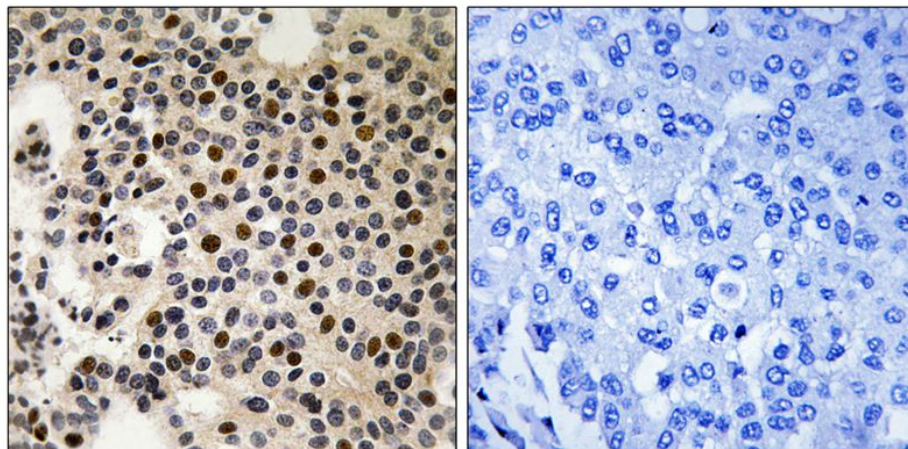
Product Type:	Primary Antibodies
Applications:	IHC
Recommended Dilution:	Immunohistochemistry on paraffin sections: 1:50~1:100 .
Reactivity:	Human, Mouse, Rat
Host:	Rabbit
Clonality:	Polyclonal
Immunogen:	Peptide sequence around phosphorylation site of Serine 197(T-R-S(p)-V-I) derived from Human PAK2 (KLH-conjugated)
Specificity:	The antibody detects endogenous levels of PAK2 only when phosphorylated at serine 197.
Formulation:	Rabbit IgG in phosphate buffered saline (without Mg ²⁺ and Ca ²⁺), pH 7.4, 150mM NaCl, 0.02% sodium azide and 50% glycerol State: Aff - Purified State: Liquid Ig fraction
Concentration:	lot specific
Purification:	Affinity chromatography using epitope-specific peptide
Conjugation:	Unconjugated
Storage:	Upon receipt, store undiluted (in aliquots) at -20°C. Avoid repeated freezing and thawing.
Stability:	Shelf life: one year from despatch.
Predicted Protein Size:	58 kDa
Gene Name:	p21 (RAC1) activated kinase 2
Database Link:	Entrez Gene 5062 Human Q13177
Background:	The activated kinase acts on a variety of targets. Likely to be the GTPase effector that links the Rho-related GTPases to the JNK MAP kinase pathway. Activated by CDC42 and RAC1. Involved in dissolution of stress fibers and reorganization of focal complexes. Involved in regulation of microtubule biogenesis through phosphorylation of TBCB. Activity is inhibited in cells undergoing apoptosis, potentially due to binding of CDC2L1 and CDC2L2.



[View online »](#)

Synonyms: PAK 2, PAK-2, Gamma-PAK, PAK gamma, PAK65, p21-activated kinase 2, p58

Product images:



Immunohistochemical analysis of paraffin-embedded human breast carcinoma tissue, using PAK2 (Phospho-Ser197) antibody (left) or the same antibody preincubated with blocking peptide (right).