

Product datasheet for **AP55768PU-S**

OXSRI pThr185 Rabbit Polyclonal Antibody

Product data:

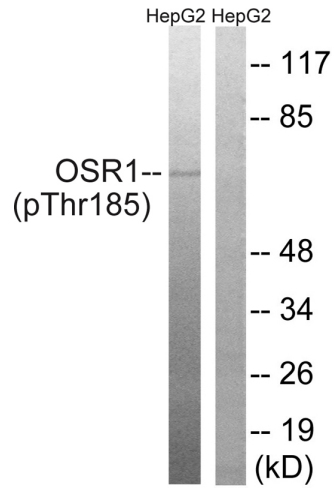
Product Type:	Primary Antibodies
Applications:	IHC, WB
Recommended Dilution:	Western blot: 1:500~1:1000. Immunohistochemistry on paraffin sections: 1:50~1:100.
Reactivity:	Human, Mouse
Host:	Rabbit
Clonality:	Polyclonal
Immunogen:	Peptide sequence around phosphorylation site of threonine185(R-K-T(p)-F-V) derived from Human OSR1 (KLH-conjugated)
Specificity:	The antibody detects endogenous levels of OSR1 only when phosphorylated at threonine 185.
Formulation:	Rabbit IgG in phosphate buffered saline (without Mg ²⁺ and Ca ²⁺), pH 7.4, 150mM NaCl, 0.02% sodium azide and 50% glycerol State: Aff - Purified State: Liquid Ig fraction
Concentration:	lot specific
Purification:	Affinity chromatography using epitope-specific peptide
Conjugation:	Unconjugated
Storage:	Upon receipt, store undiluted (in aliquots) at -20°C. Avoid repeated freezing and thawing.
Stability:	Shelf life: one year from despatch.
Predicted Protein Size:	65 kDa
Gene Name:	oxidative stress responsive 1
Database Link:	Entrez Gene 9943 Human O95747
Background:	Oxidative-stress responsive 1 gene is located in the vicinity of three others genes - GOLGA4, ITGA9 and HYA22 on chromosome 3. These four genes are considered to be candidate tumor suppressors. Oxidative-stress responsive 1 protein has similarity to human Ste20/oxidant stress response kinase-1 and is thought to be involved in the response to oxidative stress



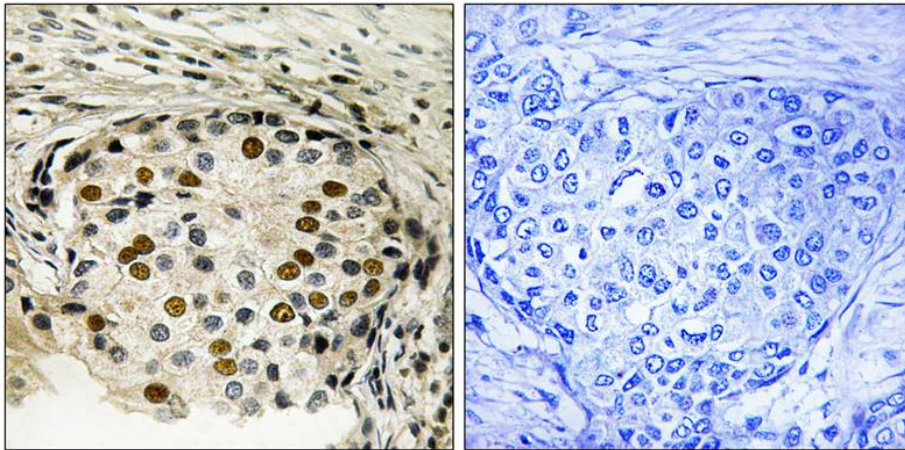
[View online »](#)

Synonyms: Serine/threonine-protein kinase OSR1, KIAA1101

Product images:



Western blot analysis of extracts from HepG2 cells treated with serum using OSR1 (Phospho-Thr185) Antibody. The lane on the right is treated with the antigen-specific peptide.



Immunohistochemical analysis of paraffin-embedded human breast carcinoma tissue using OSR1 (Phospho-Thr185) Antibody (left) or the same antibody preincubated with blocking peptide (right).