

Product datasheet for **AP55767PU-S**

PKMYT1 pSer83 Rabbit Polyclonal Antibody

Product data:

Product Type:	Primary Antibodies
Applications:	IHC
Recommended Dilution:	Immunohistochemistry on paraffin sections: 1:50~1:100 .
Reactivity:	Human
Host:	Rabbit
Clonality:	Polyclonal
Immunogen:	Peptide sequence around phosphorylation site of Serine 83(R-V-S(p)-F-R) derived from Human MYT1 (KLH-conjugated)
Specificity:	The antibody detects endogenous levels of MYT1 only when phosphorylated at serine 83.
Formulation:	Rabbit IgG in phosphate buffered saline (without Mg ²⁺ and Ca ²⁺), pH 7.4, 150mM NaCl, 0.02% sodium azide and 50% glycerol State: Aff - Purified State: Liquid Ig fraction
Concentration:	lot specific
Purification:	Affinity chromatography using epitope-specific peptide
Conjugation:	Unconjugated
Storage:	Upon receipt, store undiluted (in aliquots) at -20°C. Avoid repeated freezing and thawing.
Stability:	Shelf life: one year from despatch.
Predicted Protein Size:	54 kDa
Gene Name:	protein kinase, membrane associated tyrosine/threonine 1
Database Link:	Entrez Gene 9088 Human Q99640



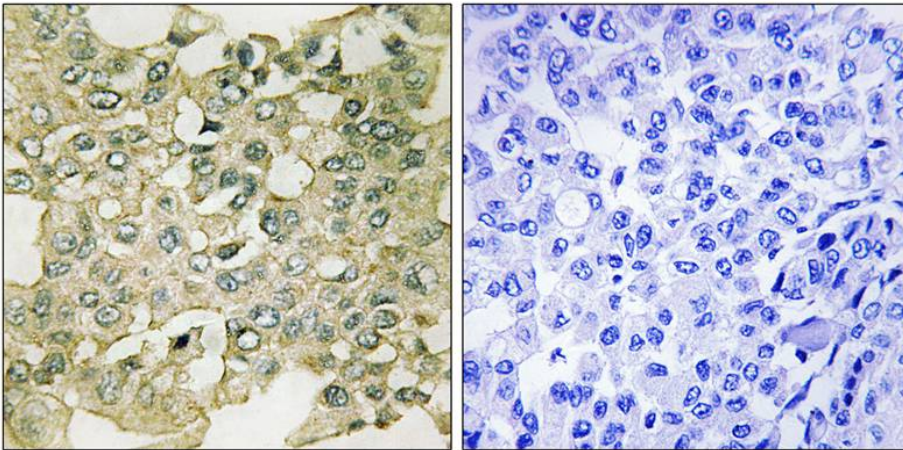
[View online »](#)

Background:

The protein encoded by this gene is a member of the serine/threonine protein kinase family. This kinase preferentially phosphorylates and inactivates cell division cycle 2 protein (CDC2), and thus negatively regulates cell cycle G2/M transition. This kinase is associated with the membrane throughout the cell cycle. Its activity is highly regulated during the cell cycle. Protein kinases AKT1/PKB and PLK (Polo-like kinase) have been shown to phosphorylate and regulate the activity of this kinase. Alternatively spliced transcript variants encoding distinct isoforms have been reported.

Synonyms:

Myt1 kinase, MYT1

Product images:

Immunohistochemical analysis of paraffin-embedded human breast carcinoma tissue using MYT1 (Phospho-Ser83) Antibody (left) or the same antibody preincubated with blocking peptide (right).