

## Product datasheet for **AP55764PU-S**

### MEK7 (MAP2K7) pSer271 Rabbit Polyclonal Antibody

#### Product data:

Product Type:	Primary Antibodies
Applications:	IHC, WB
Recommended Dilution:	<b>Western blot:</b> 1/500~1/1000. <b>Immunohistochemistry on Paraffin Sections:</b> 1/50~1/100.
Reactivity:	Human, Mouse, Rat
Host:	Rabbit
Clonality:	Polyclonal
Immunogen:	Peptide sequence around phosphorylation site of Serine 271(V-D-S(p)-K-A) derived from Human MAP2K7 (KLH-conjugated)
Specificity:	The antibody detects endogenous levels of MAP2K7 only when phosphorylated at Serine 271.
Formulation:	Phosphate buffered saline (without Mg <sup>2+</sup> and Ca <sup>2+</sup> ), pH 7.4, 150mM NaCl, 0.02% Sodium Azide and 50% Glycerol State: Aff - Purified State: Liquid Ig fraction
Concentration:	lot specific
Purification:	Affinity chromatography using epitope-specific peptide
Conjugation:	Unconjugated
Storage:	Upon receipt, store undiluted (in aliquots) at -20°C. Avoid repeated freezing and thawing.
Stability:	Shelf life: one year from despatch.
Predicted Protein Size:	60 kDa
Gene Name:	mitogen-activated protein kinase kinase 7
Database Link:	<a href="#">Entrez Gene 5609 Human O14733</a>



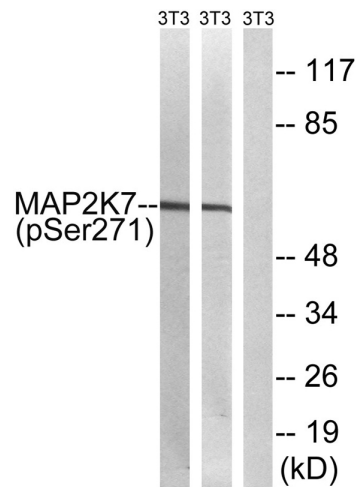
[View online »](#)

**Background:**

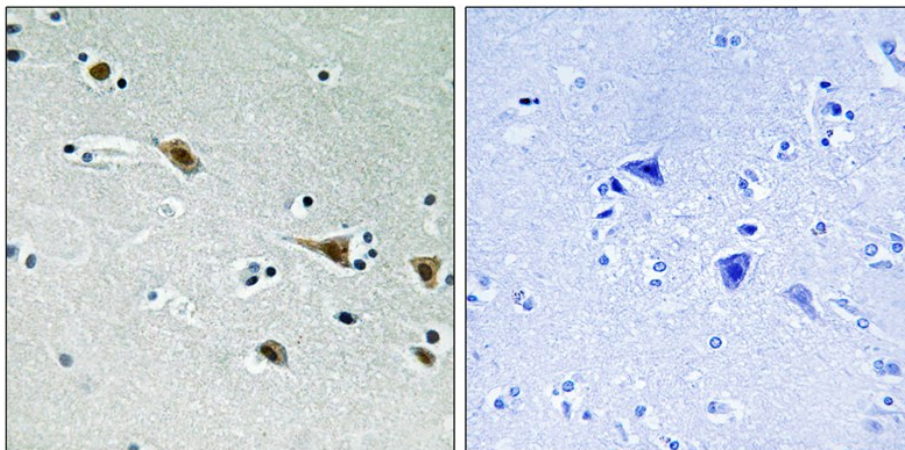
The protein encoded by this gene is a dual specificity protein kinase that belongs to the MAP kinase kinase family. This kinase specifically activates MAPK8/JNK1 and MAPK9/JNK2, and this kinase itself is phosphorylated and activated by MAP kinase kinase kinases including MAP3K1/MEKK1, MAP3K2/MEKK2, MAP3K3/MEKK5, and MAP4K2/GCK. This kinase is involved in the signal transduction mediating the cell responses to proinflammatory cytokines, and environmental stresses. Multiple alternatively spliced transcript variants encoding distinct isoforms have been found, but only one transcript variant has been supported and defined.

**Synonyms:**

MAPK/ERK kinase 7, JNK-activating kinase 2, c-Jun N-terminal kinase kinase 2, MAPKK 7, NKK2, MEK7, MKK7, MAP kinase kinase 7

**Product images:**


Western blot analysis of extracts from 3T3 cells treated with insulin using MAP2K7 (Phospho-Ser271) Antibody. The lane on the right is treated with the antigen-specific peptide.



Immunohistochemical analysis of paraffin-embedded human brain tissue, using MAP2K7 (Phospho-Ser271) Antibody (left) or the same antibody preincubated with blocking peptide (right).