

## Product datasheet for **AP55762PU-N**

### MAP3K8 pSer400 Rabbit Polyclonal Antibody

#### Product data:

Product Type:	Primary Antibodies
Applications:	IHC
Recommended Dilution:	<b>Immunohistochemistry on paraffin sections:</b> 1:50~1:100 .
Reactivity:	Human, Mouse, Rat
Host:	Rabbit
Clonality:	Polyclonal
Immunogen:	Peptide sequence around phosphorylation site of Serine 400(C-Q-S(p)-L-D) derived from HumanMAP3K8 (KLH-conjugated)
Specificity:	The antibody detects endogenous levels of MAP3K8 only when phosphorylated at serine 400.
Formulation:	Rabbit IgG in phosphate buffered saline (without Mg <sup>2+</sup> and Ca <sup>2+</sup> ), pH 7.4, 150mM NaCl, 0.02% sodium azide and 50% glycerol State: Aff - Purified State: Liquid Ig fraction
Concentration:	lot specific
Purification:	Affinity chromatography using epitope-specific peptide
Conjugation:	Unconjugated
Storage:	Upon receipt, store undiluted (in aliquots) at -20°C. Avoid repeated freezing and thawing.
Stability:	Shelf life: one year from despatch.
Predicted Protein Size:	52 kDa
Gene Name:	mitogen-activated protein kinase kinase kinase 8
Database Link:	<a href="#">Entrez Gene 1326 Human P41279</a>



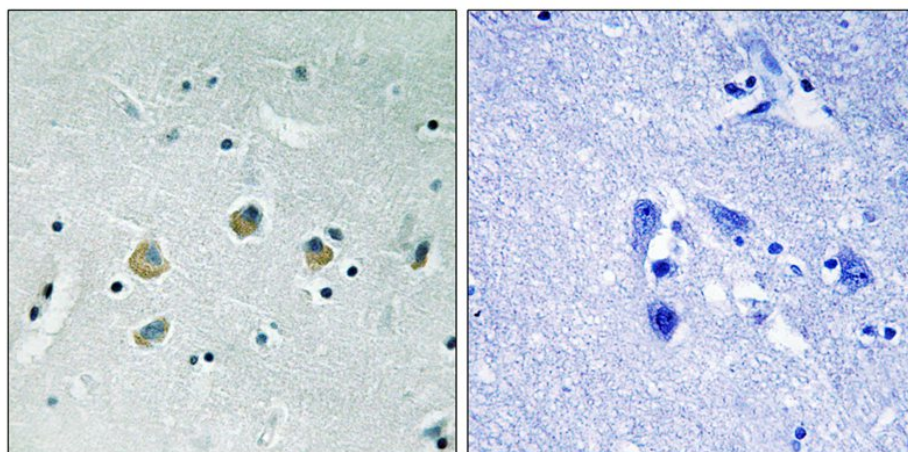
[View online »](#)

**Background:**

This gene was identified by its oncogenic transforming activity in cells. The encoded protein is a member of the serine/threonine protein kinase family. This kinase can activate both the MAP kinase and JNK kinase pathways. This kinase was shown to activate I $\kappa$ B kinases, and thus induce the nuclear production of NF- $\kappa$ B. This kinase was also found to promote the production of TNF- $\alpha$  and IL-2 during T lymphocyte activation. Studies of a similar gene in rat suggested the direct involvement of this kinase in the proteolysis of NF- $\kappa$ B1,p105 (NFKB1).

**Synonyms:**

MAPK, Tumor progression locus 2, COT, ESTF

**Product images:**

Immunohistochemical analysis of paraffin-embedded human brain tissue using MAP3K8 (Phospho-Ser400) antibody (left) or the same antibody preincubated with blocking peptide (right).