

Product datasheet for **AP55760PU-S**

LATS1 pThr1079/1041 Rabbit Polyclonal Antibody

Product data:

Product Type:	Primary Antibodies
Applications:	IHC
Recommended Dilution:	Immunohistochemistry on paraffin sections: 1:50~1:100 .
Reactivity:	Human, Mouse
Host:	Rabbit
Clonality:	Polyclonal
Immunogen:	Peptide sequence around phosphorylation site of threonine 1079/1041 (E-F-T(p)-F-R) derived from Human LATS1/2 (KLH-conjugated)
Specificity:	The antibody detects endogenous levels of LATS1/2 only when phosphorylated at threonine 1079/1041.
Formulation:	Rabbit IgG in phosphate buffered saline (without Mg ²⁺ and Ca ²⁺), pH 7.4, 150mM NaCl, 0.02% sodium azide and 50% glycerol State: Aff - Purified State: Liquid Ig fraction
Concentration:	lot specific
Purification:	Affinity chromatography using epitope-specific peptide
Conjugation:	Unconjugated
Storage:	Upon receipt, store undiluted (in aliquots) at -20°C. Avoid repeated freezing and thawing.
Stability:	Shelf life: one year from despatch.
Predicted Protein Size:	126 kDa
Gene Name:	large tumor suppressor kinase 1
Database Link:	Entrez Gene 9113 Human O95835



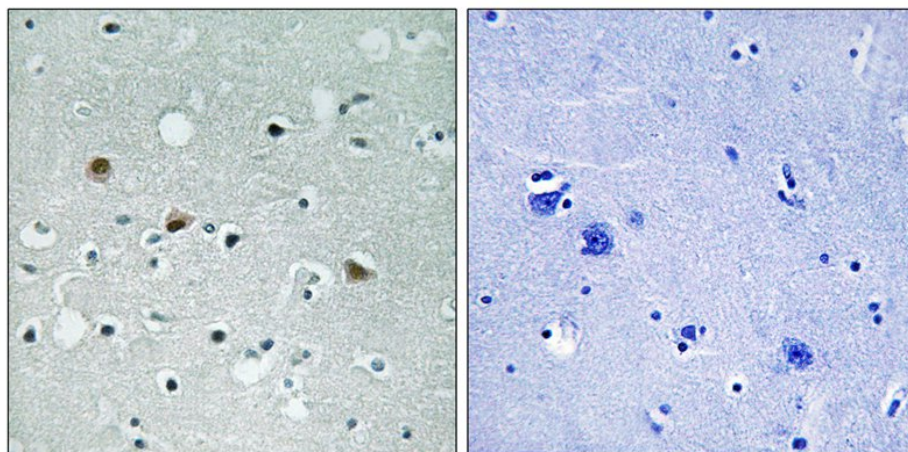
[View online »](#)

Background:

The protein encoded by this gene is a putative serine/threonine kinase that localizes to the mitotic apparatus and complexes with cell cycle controller CDC2 kinase in early mitosis. The protein is phosphorylated in a cell-cycle dependent manner, with late prophase phosphorylation remaining through metaphase. The N-terminal region of the protein binds CDC2 to form a complex showing reduced H1 histone kinase activity, indicating a role as a negative regulator of CDC2/cyclin A. In addition, the C-terminal kinase domain binds to its own N-terminal region, suggesting potential negative regulation through interference with complex formation via intramolecular binding.

Synonyms:

LATS1, WARTS, Serine/threonine-protein kinase LATS1, EC=2.7.11.1, Large tumor suppressor homolog 1, WARTS protein kinase, h-warts, KPM

Product images:

Immunohistochemical analysis of paraffin-embedded human brain tissue using LATS1/2 (Phospho-Thr1079/1041) Antibody (left) or the same antibody preincubated with blocking peptide (right).