

Product datasheet for **AP55757PU-S**

Integrin Linked Kinase (ILK) pSer246 Rabbit Polyclonal Antibody

Product data:

Product Type:	Primary Antibodies
Applications:	IHC
Recommended Dilution:	Immunohistochemistry on paraffin sections 1:50~1:100 .
Reactivity:	Human, Mouse, Rat
Host:	Rabbit
Clonality:	Polyclonal
Immunogen:	Peptide sequence around phosphorylation site of Serine 246(I-F-S(p)-H-P) derived from Human ILK (KLH-conjugated)
Specificity:	The antibody detects endogenous levels of ILK only when phosphorylated at serine 246.
Formulation:	Rabbit IgG in phosphate buffered saline (without Mg ²⁺ and Ca ²⁺), pH 7.4, 150mM NaCl, 0.02% sodium azide and 50% glycerol State: Aff - Purified State: Liquid Ig fraction
Concentration:	lot specific
Purification:	Affinity chromatography using epitope-specific peptide
Conjugation:	Unconjugated
Storage:	Upon receipt, store undiluted (in aliquots) at -20°C. Avoid repeated freezing and thawing.
Stability:	Shelf life: one year from despatch.
Predicted Protein Size:	51 kDa
Gene Name:	integrin linked kinase
Database Link:	Entrez Gene 3611 Human Q13418



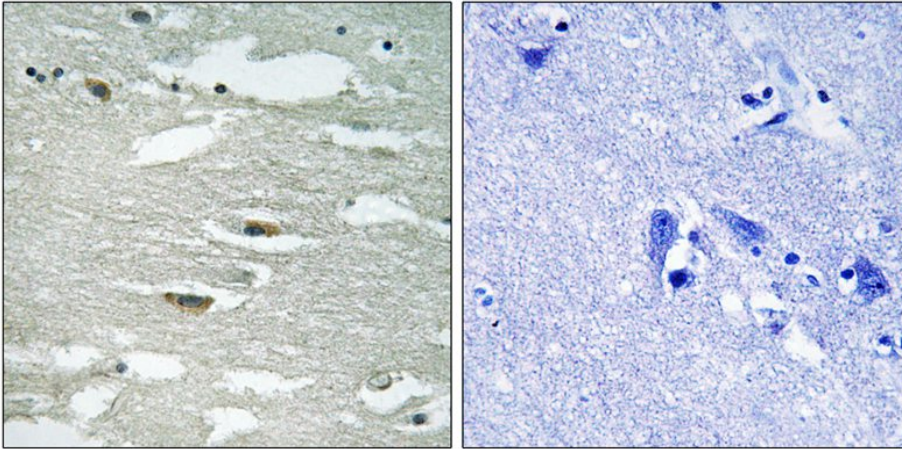
[View online »](#)

Background:

Transduction of extracellular matrix signals through integrins influences intracellular and extracellular functions, and appears to require interaction of integrin cytoplasmic domains with cellular proteins. Integrin-linked kinase (ILK), interacts with the cytoplasmic domain of beta-1 integrin. This gene encodes a serine/threonine protein kinase with 4 ankyrin-like repeats, which associates with the cytoplasmic domain of beta integrins and acts as a proximal receptor kinase regulating integrin-mediated signal transduction. Multiple alternatively spliced transcript variants encoding the same protein have been found for this gene.

Synonyms:

ILK-1, ILK-2, p59ILK, ILK, ILK1, ILK2

Product images:

Immunohistochemical analysis of paraffin-embedded human brain tissue using ILK (Phospho-Ser246) Antibody (left) or the same antibody preincubated with blocking peptide (right).