

Product datasheet for **AP55753PU-S**

Eph receptor A3 (EPHA3) pTyr779/833 Rabbit Polyclonal Antibody

Product data:

Product Type:	Primary Antibodies
Applications:	IHC
Recommended Dilution:	Immunohistochemistry on paraffin sections: 1:50~1:100 .
Reactivity:	Human, Mouse, Rat
Host:	Rabbit
Clonality:	Polyclonal
Immunogen:	Peptide sequence around phosphorylation site of tyrosine 779/833 (E-A-Y(p)-T-T)/(Q-D-V(p)-I-K) derived from Human EPHA3/4/5 (KLH-conjugated)
Specificity:	The antibody detects endogenous levels of EPHA3/4/5 only when phosphorylated at tyrosine 779/833.
Formulation:	Rabbit IgG in phosphate buffered saline (without Mg ²⁺ and Ca ²⁺), pH 7.4, 150mM NaCl, 0.02% sodium azide and 50% glycerol State: Aff - Purified State: Liquid Ig fraction
Concentration:	lot specific
Purification:	Affinity chromatography using epitope-specific peptide
Conjugation:	Unconjugated
Storage:	Upon receipt, store undiluted (in aliquots) at -20°C. Avoid repeated freezing and thawing.
Stability:	Shelf life: one year from despatch.
Predicted Protein Size:	110 kDa
Gene Name:	EPH receptor A3
Database Link:	Entrez Gene 2042 Human P29320



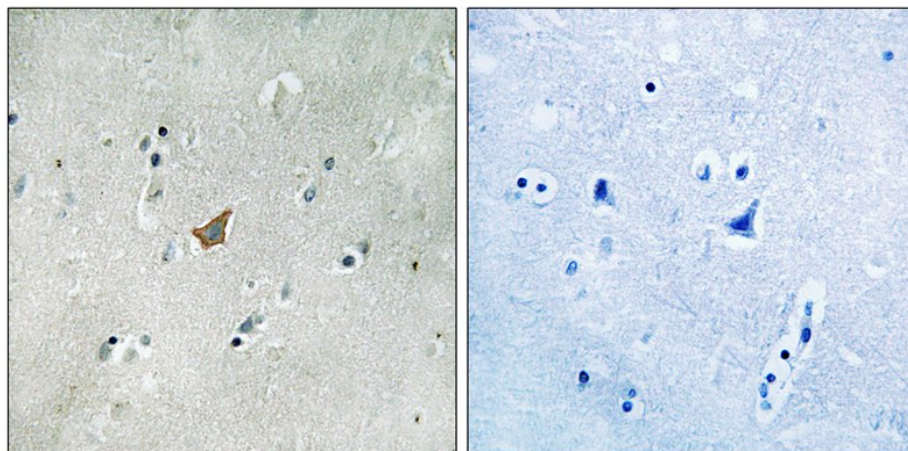
[View online »](#)

Background:

This gene belongs to the ephrin receptor subfamily of the protein-tyrosine kinase family. EPH and EPH-related receptors have been implicated in mediating developmental events, particularly in the nervous system. Receptors in the EPH subfamily typically have a single kinase domain and an extracellular region containing a Cys-rich domain and 2 fibronectin type III repeats. The ephrin receptors are divided into 2 groups based on the similarity of their extracellular domain sequences and their affinities for binding ephrin-A and ephrin-B ligands. This gene encodes a protein that binds ephrin-A ligands.

Synonyms:

Ephrin type-A receptor 3, ETK, ETK1, HEK, TYRO4, EPH-like kinase 4, EK4, EK7, hEK7, EK8, hEK4, hEK8 Human embryo kinase, TYRO1, SEK, EPHA3, EPHA4, EPHA5

Product images:

Immunohistochemical analysis of paraffin-embedded human brain tissue using EPHA3/4/5 (Phospho-Tyr779/833) Antibody (left) or the same antibody preincubated with blocking peptide (right).