

## Product datasheet for **AP55752PU-N**

### Casein Kinase 1 alpha (CSNK1A1) pTyr294 Rabbit Polyclonal Antibody

#### Product data:

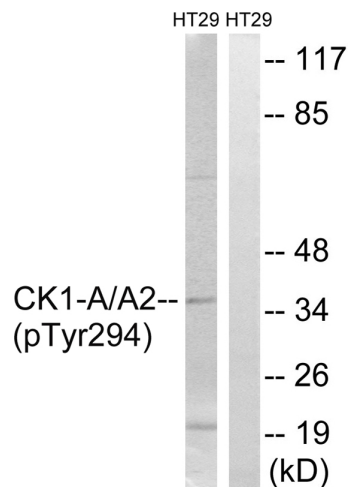
Product Type:	Primary Antibodies
Applications:	IHC, WB
Recommended Dilution:	Western blot: 1:500~1:1000. Immunohistochemistry on paraffin sections: 1:50~1:100.
Reactivity:	Human, Mouse, Rat
Host:	Rabbit
Clonality:	Polyclonal
Immunogen:	Peptide sequence around phosphorylation site of tyrosine 294 (Y-D-Y(p)-T-F) derived from Human CK-1 $\alpha$ (KLH-conjugated)
Specificity:	The antibody detects endogenous levels of CK-1 $\alpha$ only when phosphorylated at tyrosine 294.
Formulation:	Rabbit IgG in phosphate buffered saline (without Mg <sup>2+</sup> and Ca <sup>2+</sup> ), pH 7.4, 150mM NaCl, 0.02% sodium azide and 50% glycerol State: Aff - Purified State: Liquid Ig fraction
Concentration:	lot specific
Purification:	Affinity chromatography using epitope-specific peptide
Conjugation:	Unconjugated
Storage:	Upon receipt, store undiluted (in aliquots) at -20°C. Avoid repeated freezing and thawing.
Stability:	Shelf life: one year from despatch.
Predicted Protein Size:	37 kDa
Gene Name:	casein kinase 1 alpha 1
Database Link:	<a href="#">Entrez Gene 1452 Human P48729</a>
Background:	Casein kinases are operationally defined by their preferential utilization of acidic proteins such as caseins as substrates. It can phosphorylate a large number of proteins. Participates in Wnt signaling. Phosphorylates CTNNB1 at 'Ser-45'. May play a role in segregating chromosomes during mitosis.



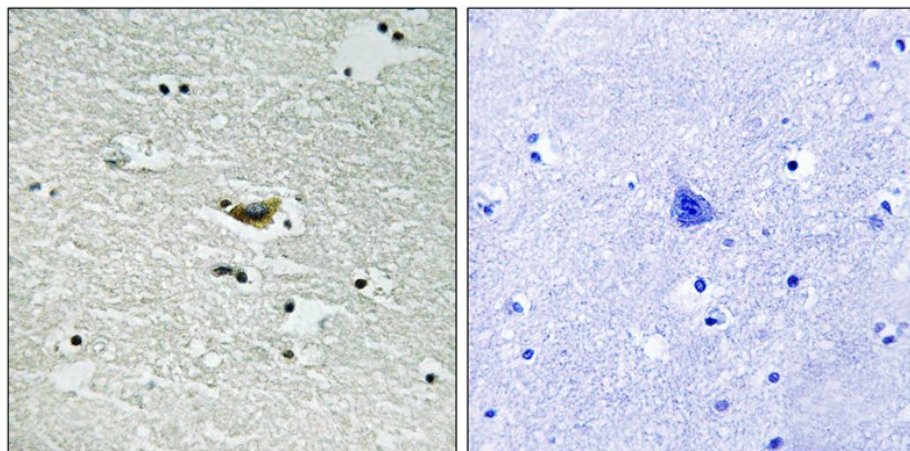
[View online »](#)

Synonyms: Casein kinase I alpha, CKI-alpha, CK1

**Product images:**



Western blot analysis of extracts from HT-29 cells treated with heat shock using CK-1a (Phospho-Tyr294) Antibody. The lane on the right is treated with the antigen-specific peptide.



Immunohistochemical analysis of paraffin-embedded human brain tissue using CK-1a (Phospho-Tyr294) antibody (left) or the same antibody preincubated with blocking peptide (right).