

## Product datasheet for **AP55747PU-S**

### Tau (MAPT) pSer519/202 Rabbit Polyclonal Antibody

#### Product data:

Product Type:	Primary Antibodies
Applications:	WB
Recommended Dilution:	<b>Western blot:</b> 1:500~1:1000.
Reactivity:	Human, Mouse, Rat
Host:	Rabbit
Clonality:	Polyclonal
Immunogen:	Peptide sequence around phosphorylation site of serine 202(P-G-S(p)-P-G) derived from Human Tau (KLH-conjugated)
Specificity:	The antibody detects endogenous levels of Tau only when phosphorylated at serine 202.
Formulation:	Rabbit IgG in phosphate buffered saline (without Mg <sup>2+</sup> and Ca <sup>2+</sup> ), pH 7.4, 150mM NaCl, 0.02% sodium azide and 50% glycerol State: Aff - Purified State: Liquid Ig fraction
Concentration:	lot specific
Purification:	Affinity chromatography using epitope-specific peptide
Conjugation:	Unconjugated
Storage:	Upon receipt, store undiluted (in aliquots) at -20°C. Avoid repeated freezing and thawing.
Stability:	Shelf life: one year from despatch.
Predicted Protein Size:	85 kDa
Gene Name:	microtubule associated protein tau
Database Link:	<a href="#">Entrez Gene 4137 Human P10636</a>



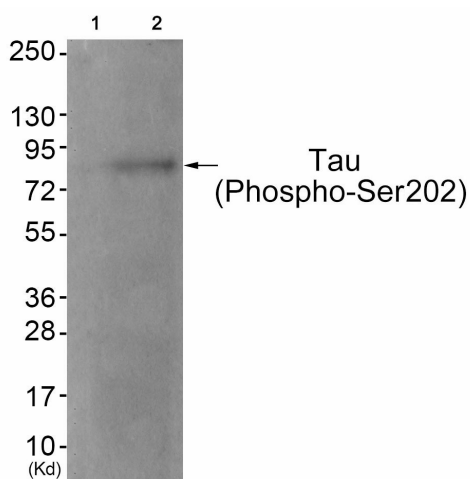
[View online »](#)

**Background:**

Promotes microtubule assembly and stability, and might be involved in the establishment and maintenance of neuronal polarity. The C-terminus binds axonal microtubules while the N-terminus binds neural plasma membrane components, suggesting that tau functions as a linker protein between both. Axonal polarity is predetermined by tau localization (in the neuronal cell) in the domain of the cell body defined by the centrosome. The short isoforms allow plasticity of the cytoskeleton whereas the longer isoforms may preferentially play a role in its stabilization.

**Synonyms:**

MAPTL, MTBT1, Microtubule-associated protein tau, PHF-tau, Neurofibrillary tangle protein, Paired helical filament-tau

**Product images:**

Western blot analysis of extracts from JK cells (Lane 2), using Tau (Phospho-Ser202) Antibody. The lane on the left is treated with antigen-specific peptide.