

## Product datasheet for **AP55746PU-S**

### Stathmin 1 (STMN1) pSer62 Rabbit Polyclonal Antibody

#### Product data:

Product Type:	Primary Antibodies
Applications:	IHC, WB
Recommended Dilution:	<b>Western blot:</b> 1:500~1:1000. <b>Immunohistochemistry on paraffin sections:</b> 1:50~1:100.
Reactivity:	Human, Mouse, Rat
Host:	Rabbit
Clonality:	Polyclonal
Immunogen:	Peptide sequence around phosphorylation site of Serine 62(R-R-K(p)-S-H) derived from Human STMN1 (KLH-conjugated)
Specificity:	The antibody detects endogenous levels of STMN1 only when phosphorylated at serine 62.
Formulation:	Rabbit IgG in phosphate buffered saline (without Mg <sup>2+</sup> and Ca <sup>2+</sup> ), pH 7.4, 150mM NaCl, 0.02% sodium azide and 50% glycerol State: Aff - Purified State: Liquid Ig fraction
Concentration:	lot specific
Purification:	Affinity chromatography using epitope-specific peptide
Conjugation:	Unconjugated
Storage:	Upon receipt, store undiluted (in aliquots) at -20°C. Avoid repeated freezing and thawing.
Stability:	Shelf life: one year from despatch.
Predicted Protein Size:	22 kDa
Gene Name:	stathmin 1
Database Link:	<a href="#">Entrez Gene 3925 Human P16949</a>



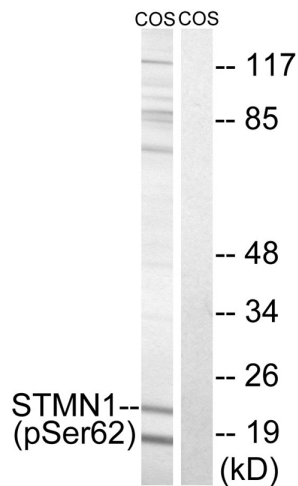
[View online »](#)

**Background:**

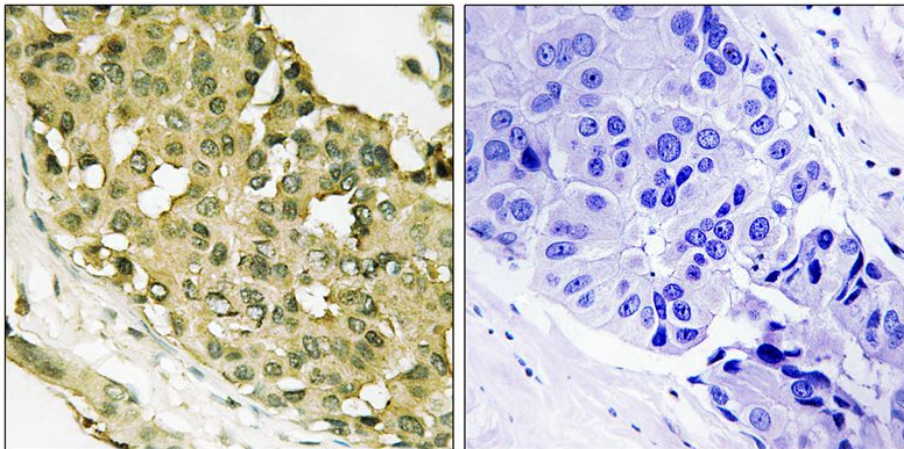
This gene belongs to the stathmin family of genes. It encodes a ubiquitous cytosolic phosphoprotein proposed to function as an intracellular relay integrating regulatory signals of the cellular environment. The encoded protein is involved in the regulation of the microtubule filament system by destabilizing microtubules. It prevents assembly and promotes disassembly of microtubules. Alternatively spliced transcript variants encoding the same protein have been identified.

**Synonyms:**

LAP18, OP18, Phosphoprotein p19, pp19, Leukemia-associated phosphoprotein p18, Oncoprotein 18, Op18, pp17, Prosolin, Metablastin, Protein Pr22

**Product images:**


Western blot analysis of extracts from COS cells treated with nocodazole using STMN1 (Phospho-Ser62) Antibody #. The lane on the right is treated with the antigen-specific peptide.



Immunohistochemical analysis of paraffin-embedded human breast carcinoma tissue using STMN1 (Phospho-Ser62) Antibody (left) or the same antibody preincubated with blocking peptide (right).