

## Product datasheet for **AP55745PU-S**

### **SHP1 (PTPN6) pTyr564 Rabbit Polyclonal Antibody**

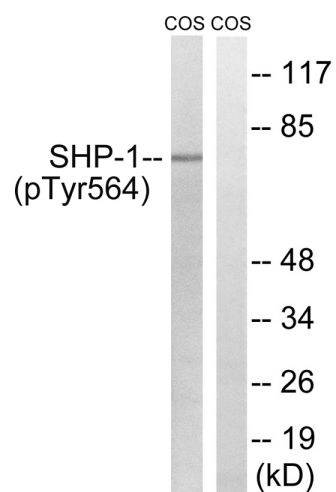
#### **Product data:**

Product Type:	Primary Antibodies
Applications:	WB
Recommended Dilution:	<b>Western blot:</b> 1/500~1/1000.
Reactivity:	Human
Host:	Rabbit
Clonality:	Polyclonal
Immunogen:	Peptide sequence around phosphorylation site of tyrosine 564(D-V-Y(p)-E-N) derived from Human SHP-1 (KLH-conjugated)
Specificity:	The antibody detects endogenous levels of SHP-1 only when phosphorylated at tyrosine 564.
Formulation:	Rabbit IgG in phosphate buffered saline (without Mg <sup>2+</sup> and Ca <sup>2+</sup> ), pH 7.4, 150mM NaCl, 0.02% sodium azide and 50% glycerol State: Aff - Purified State: Liquid Ig fraction
Concentration:	lot specific
Purification:	Affinity chromatography using epitope-specific peptide
Conjugation:	Unconjugated
Storage:	Upon receipt, store undiluted (in aliquots) at -20°C. Avoid repeated freezing and thawing.
Stability:	Shelf life: one year from despatch.
Predicted Protein Size:	70 kDa
Gene Name:	protein tyrosine phosphatase, non-receptor type 6
Database Link:	<a href="#">Entrez Gene 5777 Human P29350</a>
Background:	Acts downstream of various receptor and cytoplasmic protein tyrosine kinases to participate in the signal transduction from the cell surface to the nucleus.
Synonyms:	PTPN-6, HCP, PTP1C, Protein-tyrosine phosphatase 1C, PTP-1C, SH-PTP1, Protein-tyrosine phosphatase SHP-1



[View online »](#)

## Product images:



Western blot analysis of extracts from COS7 cells treated with EGF using SHP-1 (Phospho-Tyr564) Antibody #. The lane on the right is treated with the antigen-specific peptide.