

Product datasheet for **AP55744PU-S**

Rb (RB1) pSer608 Rabbit Polyclonal Antibody

Product data:

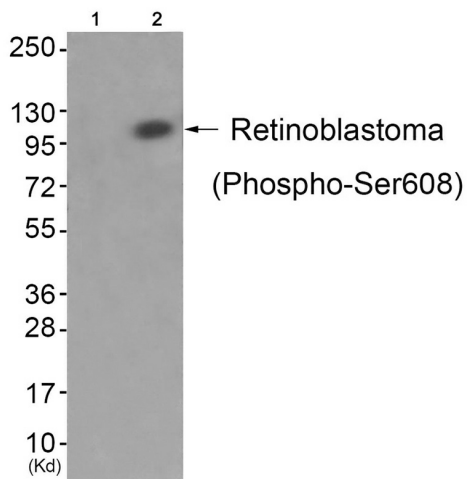
Product Type:	Primary Antibodies
Applications:	IHC, WB
Recommended Dilution:	Western blot: 1:500~1:1000. Immunohistochemistry on paraffin sections: 1:50~1:100.
Reactivity:	Human, Mouse
Host:	Rabbit
Clonality:	Polyclonal
Immunogen:	Peptide sequence around phosphorylation site of Serine 608(Y-L-S(p)-P-V) derived from Human Retinoblastoma (KLH-conjugated)
Specificity:	The antibody detects endogenous levels of Retinoblastoma only when phosphorylated at serine 608.
Formulation:	Rabbit IgG in phosphate buffered saline (without Mg ²⁺ and Ca ²⁺), pH 7.4, 150mM NaCl, 0.02% sodium azide and 50% glycerol State: Aff - Purified State: Liquid Ig fraction
Concentration:	lot specific
Purification:	Affinity chromatography using epitope-specific peptide
Conjugation:	Unconjugated
Storage:	Upon receipt, store undiluted (in aliquots) at -20°C. Avoid repeated freezing and thawing.
Stability:	Shelf life: one year from despatch.
Predicted Protein Size:	110 kDa
Gene Name:	RB transcriptional corepressor 1
Database Link:	Entrez Gene 5925 Human P06400
Background:	Retinoblastoma (RB) is an embryonic malignant neoplasm of retinal origin. It almost always presents in early childhood and is often bilateral. Spontaneous regression ('cure') occurs in some cases.



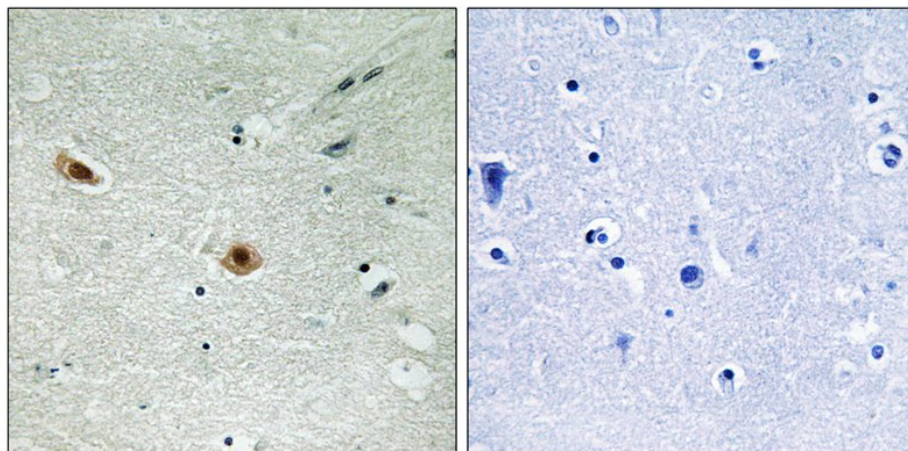
[View online »](#)

Synonyms: Retinoblastoma 1, Rb, p105-Rb, pRb, pp110, OSRC

Product images:



Western blot analysis of extracts from JK cells (Lane 2), using Retinoblastoma (Phospho-Ser608) Antibody. The lane on the left is treated with antigen-specific peptide.



Immunohistochemical analysis of paraffin-embedded human brain tissue using Retinoblastoma (Phospho-Ser608) Antibody (left) or the same antibody preincubated with blocking peptide (right).