

## Product datasheet for **AP55741PU-N**

### IGF1 Receptor (IGF1R) pTyr1346 Rabbit Polyclonal Antibody

#### Product data:

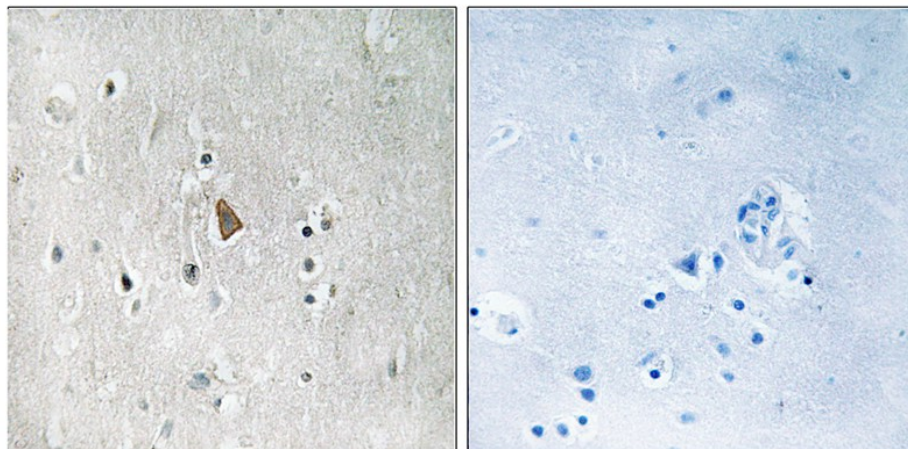
Product Type:	Primary Antibodies
Applications:	IHC
Recommended Dilution:	<b>Immunohistochemistry on paraffin sections:</b> 1:50~1:100.
Reactivity:	Human, Mouse, Rat
Host:	Rabbit
Clonality:	Polyclonal
Immunogen:	Peptide sequence around phosphorylation site of tyrosine 1346(Q-P-Y(p)-A-H) derived from Human IGF1R (KLH-conjugated)
Specificity:	The antibody detects endogenous levels of IGF1R only when phosphorylated at tyrosine 1346.
Formulation:	Rabbit IgG in phosphate buffered saline (without Mg <sup>2+</sup> and Ca <sup>2+</sup> ), pH 7.4, 150mM NaCl, 0.02% sodium azide and 50% glycerol State: Aff - Purified State: Liquid Ig fraction
Concentration:	lot specific
Purification:	Affinity chromatography using epitope-specific peptide
Conjugation:	Unconjugated
Storage:	Upon receipt, store undiluted (in aliquots) at -20°C. Avoid repeated freezing and thawing.
Stability:	Shelf life: one year from despatch.
Predicted Protein Size:	154 kDa
Gene Name:	insulin like growth factor 1 receptor
Database Link:	<a href="#">Entrez Gene 3480 Human P08069</a>
Background:	This receptor binds insulin-like growth factor with a high affinity. It has tyrosine kinase activity. The insulin-like growth factor I receptor plays a critical role in transformation events. Cleavage of the precursor generates alpha and beta subunits. It is highly overexpressed in most malignant tissues where it functions as an anti-apoptotic agent by enhancing cell survival.



[View online »](#)

Synonyms: IGF-I receptor, IGF1 Receptor

**Product images:**



Immunohistochemical analysis of paraffin-embedded human brain tissue using IGF1R (Phospho-Tyr1346) antibody (left) or the same antibody preincubated with blocking peptide (right).