

## Product datasheet for **AP55740PU-S**

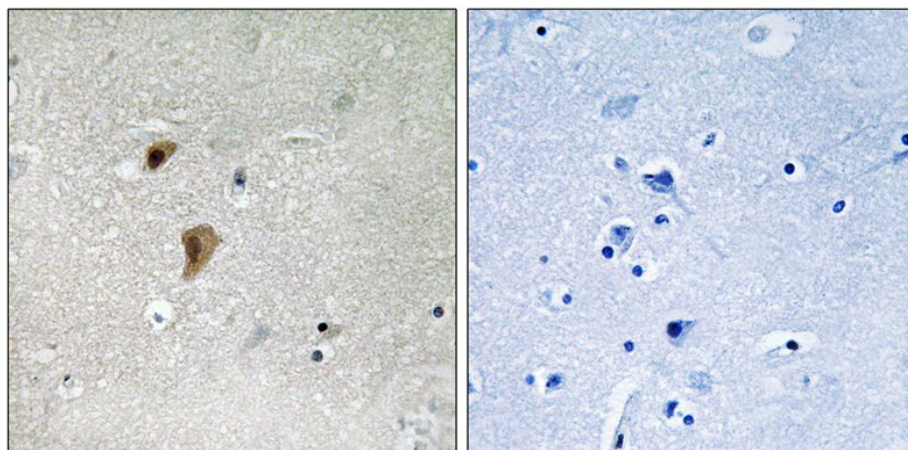
### HSF1 pThr142 Rabbit Polyclonal Antibody

#### Product data:

Product Type:	Primary Antibodies
Applications:	IHC
Recommended Dilution:	<b>Immunohistochemistry on paraffin sections:</b> 1:50~1:100 .
Reactivity:	Human, Mouse
Host:	Rabbit
Clonality:	Polyclonal
Immunogen:	Peptide sequence around phosphorylation site of threonine 142(L-L-T(p)-D-V) derived from Human HSF1 (KLH-conjugated)
Specificity:	The antibody detects endogenous levels of HSF1 only when phosphorylated at threonine 142.
Formulation:	Rabbit IgG in phosphate buffered saline (without Mg <sup>2+</sup> and Ca <sup>2+</sup> ), pH 7.4, 150mM NaCl, 0.02% sodium azide and 50% glycerol State: Aff - Purified State: Liquid Ig fraction
Concentration:	lot specific
Purification:	Affinity chromatography using epitope-specific peptide
Conjugation:	Unconjugated
Storage:	Upon receipt, store undiluted (in aliquots) at -20°C. Avoid repeated freezing and thawing.
Stability:	Shelf life: one year from despatch.
Predicted Protein Size:	57 kDa
Gene Name:	heat shock transcription factor 1
Database Link:	<a href="#">Entrez Gene 3297 Human Q00613</a>
Background:	DNA-binding protein that specifically binds heat shock promoter elements (HSE) and activates transcription. In higher eukaryotes, HSF is unable to bind to the HSE unless the cells are heat shocked.
Synonyms:	HSTF1, HSF-1



[View online »](#)

**Product images:**

Immunohistochemical analysis of paraffin-embedded human brain tissue using HSF1 (Phospho-Thr142) Antibody (left) or the same antibody preincubated with blocking peptide (right).