

Product datasheet for **AP55737PU-S**

SNAIL (SNAI1) pSer246 Rabbit Polyclonal Antibody

Product data:

Product Type:	Primary Antibodies
Applications:	IF, WB
Recommended Dilution:	Western blot: 1:500~1:1000. Immunofluorescence: 1:100~1:200.
Reactivity:	Human, Mouse
Host:	Rabbit
Clonality:	Polyclonal
Immunogen:	Peptide sequence around phosphorylation site of Serine 246(T-F-S(p)-R-M) derived from Human SNAI1 (KLH-conjugated)
Specificity:	The antibody detects endogenous levels of SNAI1 only when phosphorylated at serine 246.
Formulation:	Rabbit IgG in phosphate buffered saline (without Mg ²⁺ and Ca ²⁺), pH 7.4, 150mM NaCl, 0.02% sodium azide and 50% glycerol State: Aff - Purified State: Liquid Ig fraction
Concentration:	lot specific
Purification:	Affinity chromatography using epitope-specific peptide
Conjugation:	Unconjugated
Storage:	Upon receipt, store undiluted (in aliquots) at -20°C. Avoid repeated freezing and thawing.
Stability:	Shelf life: one year from despatch.
Predicted Protein Size:	29 kDa
Gene Name:	snail family transcriptional repressor 1
Database Link:	Entrez Gene 6615 Human O95863



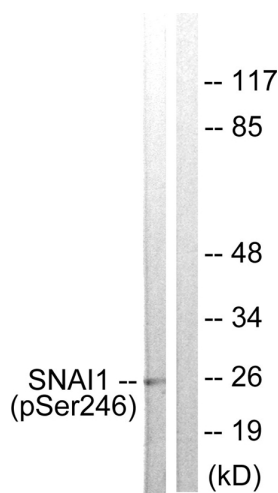
[View online »](#)

Background:

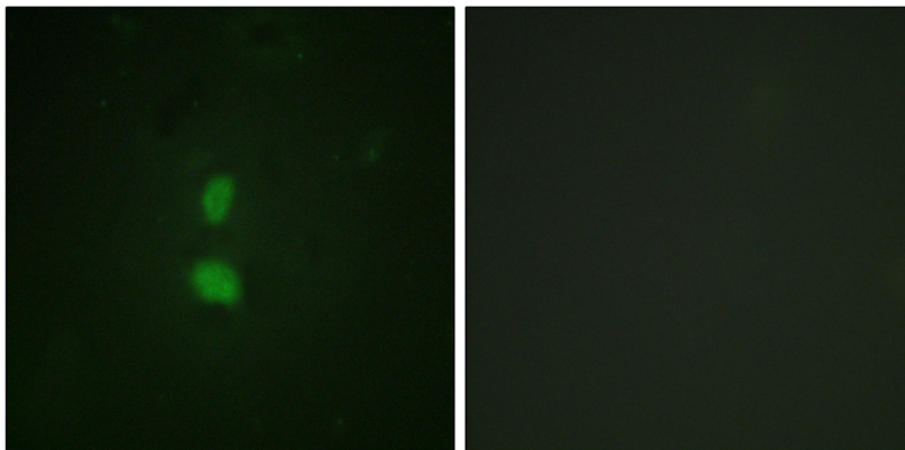
Involved in induction of the epithelial to mesenchymal transition (EMT), formation and maintenance of embryonic mesoderm, growth arrest, survival and cell migration. Binds to 3 E-boxes of the E-cadherin/CDH1 gene promoter and to the promoters of CLDN7 and KRT8 and, in association with histone demethylase KDM1A which it recruits to the promoters, causes a decrease in dimethylated H3K4 levels and represses transcription. Associates with EGR1 and SP1 to mediate tetradecanoyl phorbol acetate (TPA)-induced up-regulation of CDKN2B, possibly by binding to the CDKN2B promoter region 5'-TCACA-3. In addition, may also activate the CDKN2B promoter by itself.

Synonyms:

SNAH, Protein snail homolog 1

Product images:


Western blot analysis of extracts from HT29 cells using SNAI1 (Phospho-Ser246) Antibody. The lane on the right is treated with the antigen-specific peptide.



Immunofluorescence staining of methanol-fixed HuvEc cells using SNAI1 (Phospho-Ser246) Antibody.