

## Product datasheet for **AP55736PU-N**

### IGF2R pSer2409 Rabbit Polyclonal Antibody

#### Product data:

Product Type:	Primary Antibodies
Applications:	IHC, WB
Recommended Dilution:	<b>Western blot:</b> 1:500~1:1000. <b>Immunohistochemistry on paraffin sections:</b> 1:50~1:100.
Reactivity:	Human, Mouse
Host:	Rabbit
Clonality:	Polyclonal
Immunogen:	Peptide sequence around phosphorylation site of Serine 2409(Q-D-S(p)-E-D) derived from Human IGF2R (KLH-conjugated)
Specificity:	The antibody detects endogenous levels of IGF2R only when phosphorylated at serine 2409.
Formulation:	Rabbit IgG in phosphate buffered saline (without Mg <sup>2+</sup> and Ca <sup>2+</sup> ), pH 7.4, 150mM NaCl, 0.02% sodium azide and 50% glycerol State: Aff - Purified State: Liquid Ig fraction
Concentration:	lot specific
Purification:	Affinity chromatography using epitope-specific peptide
Conjugation:	Unconjugated
Storage:	Upon receipt, store undiluted (in aliquots) at -20°C. Avoid repeated freezing and thawing.
Stability:	Shelf life: one year from despatch.
Predicted Protein Size:	300 kDa
Gene Name:	insulin like growth factor 2 receptor
Database Link:	<a href="#">Entrez Gene 3482 Human P11717</a>



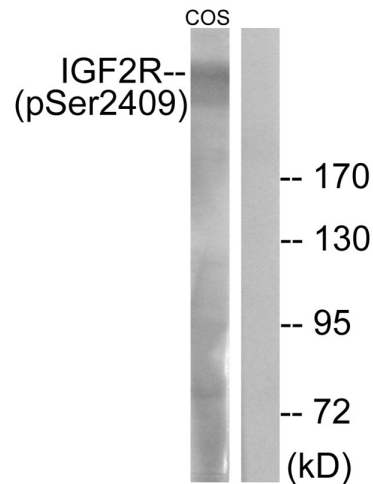
[View online »](#)

**Background:**

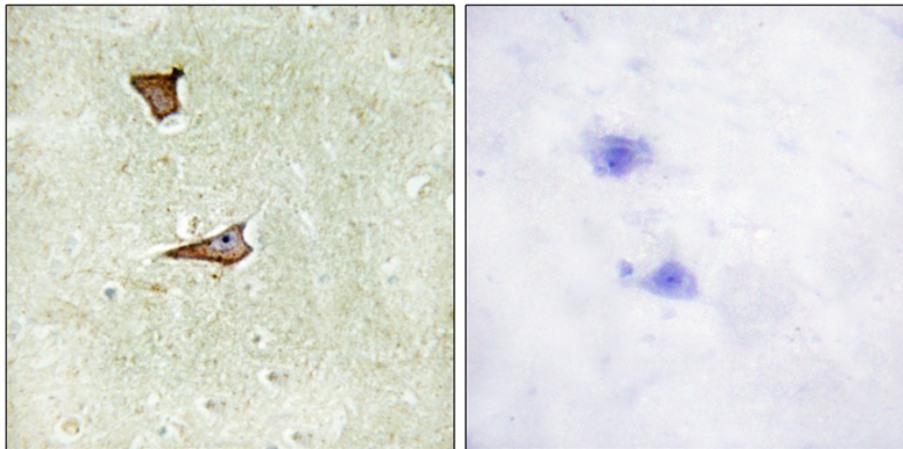
Transport of phosphorylated lysosomal enzymes from the Golgi complex and the cell surface to lysosomes. Lysosomal enzymes bearing phosphomannosyl residues bind specifically to mannose-6-phosphate receptors in the Golgi apparatus and the resulting receptor-ligand complex is transported to an acidic prelysosomal compartment where the low pH mediates the dissociation of the complex. This receptor also binds IGF2. Acts as a positive regulator of T-cell coactivation, by binding DPP4.

**Synonyms:**

CI-MPR, Insulin-like growth factor 2 receptor, Insulin-like growth factor II receptor, M6P/IGF2 receptor, CI Man-6-P receptor, M6PR, Late Endosome Marker, M6P/IGF2R, MPR 300

**Product images:**


Western blot analysis of extracts from COS-7 cells treated with UV using IGF2R (Phospho-Ser2409) Antibody. The lane on the right is treated with the antigen-specific peptide.



Immunohistochemical analysis of paraffin-embedded human brain tissue using IGF2R (Phospho-Ser2409) antibody (left) or the same antibody preincubated with blocking peptide (right).