

## Product datasheet for **AP55735PU-S**

### EMA (MUC1) pTyr1229 Rabbit Polyclonal Antibody

#### Product data:

Product Type:	Primary Antibodies
Applications:	IF, IHC, WB
Recommended Dilution:	<b>Western blot:</b> 1:500~1:1000. <b>Immunohistochemistry on paraffin sections:</b> 1:50~1:100. <b>Immunofluorescence:</b> 1:100~1:200.
Reactivity:	Human
Host:	Rabbit
Clonality:	Polyclonal
Immunogen:	Peptide sequence around phosphorylation site of tyrosine 1229 S-P-Y(p)-E-K derived from Human CD227/MUC1 (KLH-conjugated)
Specificity:	The antibody detects endogenous levels of CD227/MUC1 only when phosphorylated at tyrosine 1229.
Formulation:	Rabbit IgG in phosphate buffered saline (without Mg <sup>2+</sup> and Ca <sup>2+</sup> ), pH 7.4, 150mM NaCl, 0.02% sodium azide and 50% glycerol State: Aff - Purified State: Liquid Ig fraction
Concentration:	lot specific
Purification:	Affinity chromatography using epitope-specific peptide
Conjugation:	Unconjugated
Storage:	Upon receipt, store undiluted (in aliquots) at -20°C. Avoid repeated freezing and thawing.
Stability:	Shelf life: one year from despatch.
Predicted Protein Size:	170 kDa
Gene Name:	mucin 1, cell surface associated
Database Link:	<a href="#">Entrez Gene 4582 Human P15941</a>

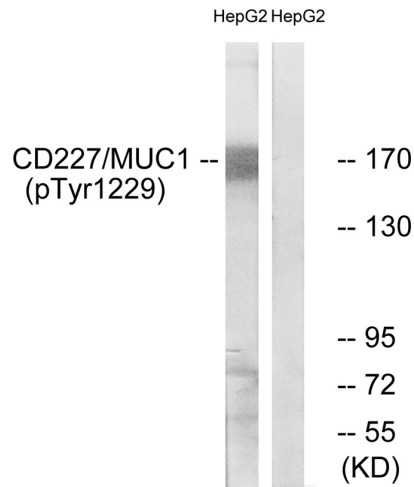


[View online »](#)

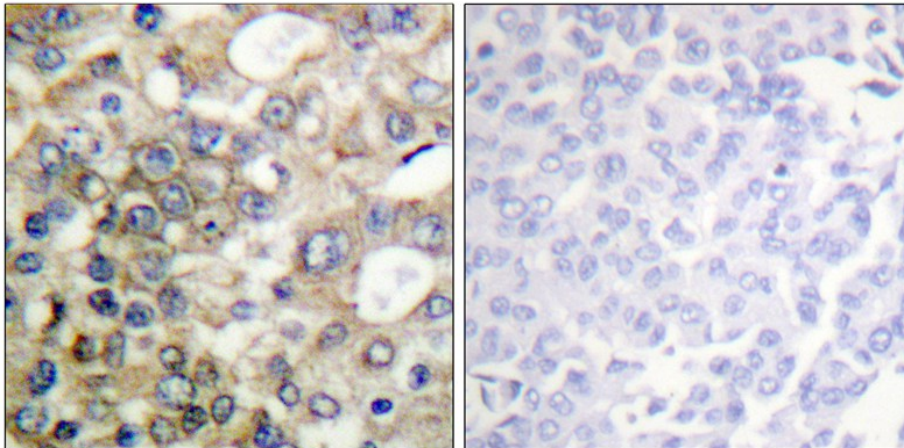
**Background:** The alpha subunit has cell adhesive properties. Can act both as an adhesion and an anti-adhesion protein. May provide a protective layer on epithelial cells against bacterial and enzyme attack.

**Synonyms:** MUC-1, PEMT, Episialin, EMA, H23AG, PUM, DF3, CA 15-3

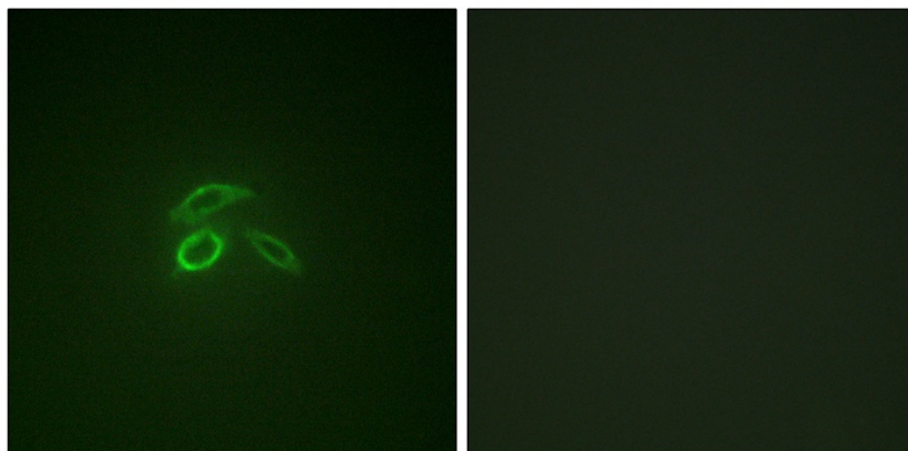
**Product images:**



Western blot analysis of extracts from HepG2 cells treated with PMA using CD227/MUC1 (Phospho-Tyr1229) Antibody. The lane on the right is treated with the antigen-specific peptide.



Immunohistochemical analysis of paraffin-embedded human breast carcinoma tissue using CD227/MUC1 (Phospho-Tyr1229) Antibody (left) or the same antibody preincubated with blocking peptide (right).



Immunofluorescence staining of methanol-fixed HepG2 cells using CD227/MUC1 (Phospho-Tyr1229) Antibody.