

## Product datasheet for **AP55733PU-S**

### **TIS11B (ZFP36L1) pSer92 Rabbit Polyclonal Antibody**

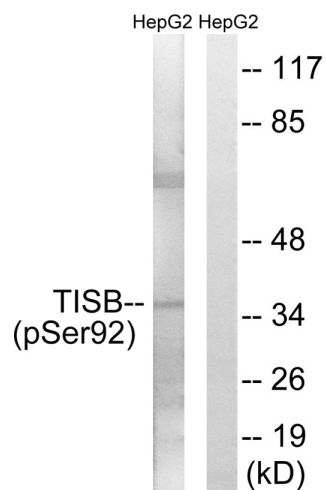
#### **Product data:**

Product Type:	Primary Antibodies
Applications:	WB
Recommended Dilution:	<b>Western blot:</b> 1:500~1:1000.
Reactivity:	Human, Mouse
Host:	Rabbit
Clonality:	Polyclonal
Immunogen:	Peptide sequence around phosphorylation site of Serine 92(S-F-S(p)-E-G) derived from Human TISB (KLH-conjugated)
Specificity:	The antibody detects endogenous levels of TISB only when phosphorylated at serine 92.
Formulation:	Rabbit IgG in phosphate buffered saline (without Mg <sup>2+</sup> and Ca <sup>2+</sup> ), pH 7.4, 150mM NaCl, 0.02% sodium azide and 50% glycerol State: Aff - Purified State: Liquid Ig fraction
Concentration:	lot specific
Purification:	Affinity chromatography using epitope-specific peptide
Conjugation:	Unconjugated
Storage:	Upon receipt, store undiluted (in aliquots) at -20°C. Avoid repeated freezing and thawing.
Stability:	Shelf life: one year from despatch.
Predicted Protein Size:	36 kDa
Gene Name:	ZFP36 ring finger protein-like 1
Database Link:	<a href="#">Entrez Gene 677 Human Q07352</a>
Background:	Probable regulatory protein involved in regulating the response to growth factors.
Synonyms:	Butyrate response factor 1, BRF1, BERG36, RNF162B, ERF1, ERF-1



[View online »](#)

## Product images:



Western blot analysis of extracts from HepG2 cells using TISB (Phospho-Ser92) Antibody. The lane on the right is treated with the antigen-specific peptide.