

## Product datasheet for **AP55731PU-S**

### **NCF1 pSer304 Rabbit Polyclonal Antibody**

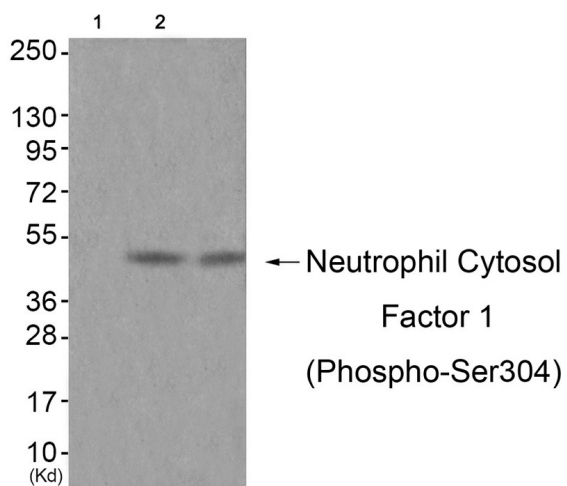
#### **Product data:**

Product Type:	Primary Antibodies
Applications:	WB
Recommended Dilution:	<b>Western blot:</b> 1:500~1:1000.
Reactivity:	Human
Host:	Rabbit
Clonality:	Polyclonal
Immunogen:	Peptide sequence around phosphorylation site of Serine 304(R-S-S(p)-I-R) derived from Human Neutrophil Cytosol Factor 1 (KLH-conjugated)
Specificity:	The antibody detects endogenous levels of Neutrophil Cytosol Factor 1 only when phosphorylated at serine 304.
Formulation:	Rabbit IgG in phosphate buffered saline (without Mg <sup>2+</sup> and Ca <sup>2+</sup> ), pH 7.4, 150mM NaCl, 0.02% sodium azide and 50% glycerol State: Aff - Purified State: Liquid Ig fraction
Concentration:	lot specific
Purification:	Affinity chromatography using epitope-specific peptide
Conjugation:	Unconjugated
Storage:	Upon receipt, store undiluted (in aliquots) at -20°C. Avoid repeated freezing and thawing.
Stability:	Shelf life: one year from despatch.
Predicted Protein Size:	44 kDa
Gene Name:	neutrophil cytosolic factor 1
Database Link:	<a href="#">Entrez Gene 653361 Human P14598</a>
Background:	NCF2, NCF1, and a membrane bound cytochrome b558 are required for activation of the latent NADPH oxidase (necessary for superoxide production).
Synonyms:	NCF-1, Neutrophil cytosol factor 1, NOXO2, Nox organizer 2, SH3PXD1A



[View online »](#)

## Product images:



Western blot analysis of extracts from JK cells (Lane 2) and cos-7 cells (Lane 3), using Neutrophil Cytosol Factor 1 (Phospho-Ser304) Antibody. The lane on the left is treated with antigen-specific peptide.