

Product datasheet for **AP55731PU-N**

NCF1 pSer304 Rabbit Polyclonal Antibody

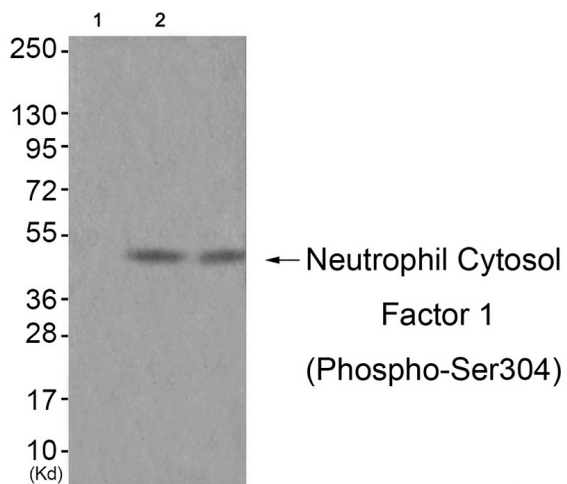
Product data:

| | |
|-------------------------|---|
| Product Type: | Primary Antibodies |
| Applications: | WB |
| Recommended Dilution: | Western blot: 1:500~1:1000. |
| Reactivity: | Human |
| Host: | Rabbit |
| Clonality: | Polyclonal |
| Immunogen: | Peptide sequence around phosphorylation site of Serine 304(R-S-S(p)-I-R) derived from Human Neutrophil Cytosol Factor 1 (KLH-conjugated) |
| Specificity: | The antibody detects endogenous levels of Neutrophil Cytosol Factor 1 only when phosphorylated at serine 304. |
| Formulation: | Rabbit IgG in phosphate buffered saline (without Mg ²⁺ and Ca ²⁺), pH 7.4, 150mM NaCl, 0.02% sodium azide and 50% glycerol State: Aff - Purified State: Liquid Ig fraction |
| Concentration: | lot specific |
| Purification: | Affinity chromatography using epitope-specific peptide |
| Conjugation: | Unconjugated |
| Storage: | Upon receipt, store undiluted (in aliquots) at -20°C. Avoid repeated freezing and thawing. |
| Stability: | Shelf life: one year from despatch. |
| Predicted Protein Size: | 44 kDa |
| Gene Name: | neutrophil cytosolic factor 1 |
| Database Link: | Entrez Gene 653361 Human P14598 |
| Background: | NCF2, NCF1, and a membrane bound cytochrome b558 are required for activation of the latent NADPH oxidase (necessary for superoxide production). |
| Synonyms: | NCF-1, Neutrophil cytosol factor 1, NOXO2, Nox organizer 2, SH3PXD1A |



[View online »](#)

Product images:



Western blot analysis of extracts from JK cells (Lane 2) and cos-7 cells (Lane 3), using Neutrophil Cytosol Factor 1 (Phospho-Ser304) Antibody. The lane on the left is treated with antigen-specific peptide.