

Product datasheet for **AP55730PU-S**

MDM2 pSer186/Ser188 Rabbit Polyclonal Antibody

Product data:

Product Type:	Primary Antibodies
Applications:	IF
Recommended Dilution:	Immunofluorescence: 1:100~1:200.
Reactivity:	Human
Host:	Rabbit
Clonality:	Polyclonal
Immunogen:	Peptide sequence around phosphorylation site of Ser186/Ser188(H-K-S(p)-D-S(p)-I-S) derived from Human MDM2 (KLH-conjugated)
Specificity:	The antibody detects endogenous levels of MDM2 only when phosphorylated at serine 186 and serine 188.
Formulation:	Rabbit IgG in phosphate buffered saline (without Mg ²⁺ and Ca ²⁺), pH 7.4, 150mM NaCl, 0.02% sodium azide and 50% glycerol State: Aff - Purified State: Liquid Ig fraction
Concentration:	lot specific
Purification:	Affinity chromatography using epitope-specific peptide
Conjugation:	Unconjugated
Storage:	Upon receipt, store undiluted (in aliquots) at -20°C. Avoid repeated freezing and thawing.
Stability:	Shelf life: one year from despatch.
Predicted Protein Size:	55 kDa
Gene Name:	MDM2 proto-oncogene
Database Link:	Entrez Gene 4193 Human Q00987



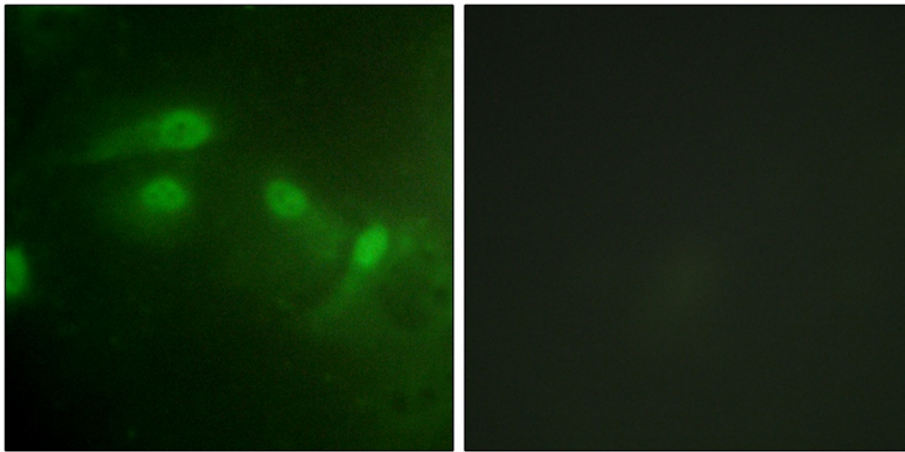
[View online »](#)

Background:

This gene is a target gene of the transcription factor tumor protein p53. The encoded protein is a nuclear phosphoprotein that binds and inhibits transactivation by tumor protein p53, as part of an autoregulatory negative feedback loop. Overexpression of this gene can result in excessive inactivation of tumor protein p53, diminishing its tumor suppressor function. This protein has E3 ubiquitin ligase activity, which targets tumor protein p53 for proteasomal degradation. This protein also affects the cell cycle, apoptosis, and tumorigenesis through interactions with other proteins, including retinoblastoma 1 and ribosomal protein L5. More than 40 different alternatively spliced transcript variants have been isolated from both tumor and normal tissues

Synonyms:

p53-binding protein Mdm2, Oncoprotein Mdm2, Double minute 2 protein, Hdm2

Product images:

Immunofluorescence staining of methanol-fixed HeLa cells using MDM2 (Phospho-Ser186/Ser188) Antibody.