

## Product datasheet for **AP55729PU-S**

### TGF beta Receptor II (TGFB2) pSer225/250 Rabbit Polyclonal Antibody

#### Product data:

Product Type:	Primary Antibodies
Applications:	IHC
Recommended Dilution:	<b>Immunohistochemistry on paraffin sections:</b> 1:50~1:100 .
Reactivity:	Human, Mouse, Rat
Host:	Rabbit
Clonality:	Polyclonal
Immunogen:	Peptide sequence around phosphorylation site of Serine 225/250(D-R-S(p)-D-I) derived from Human TGF $\beta$ Receptor II (KLH-conjugated)
Specificity:	The antibody detects endogenous levels of TGF $\beta$ Receptor II only when phosphorylated at serine 225/250.
Formulation:	Rabbit IgG in phosphate buffered saline (without Mg <sup>2+</sup> and Ca <sup>2+</sup> ), pH 7.4, 150mM NaCl, 0.02% sodium azide and 50% glycerol State: Aff - Purified State: Liquid Ig fraction
Concentration:	lot specific
Purification:	Affinity chromatography using epitope-specific peptide
Conjugation:	Unconjugated
Storage:	Upon receipt, store undiluted (in aliquots) at -20°C. Avoid repeated freezing and thawing.
Stability:	Shelf life: one year from despatch.
Predicted Protein Size:	64 kDa
Gene Name:	transforming growth factor beta receptor 2
Database Link:	<a href="#">Entrez Gene 7048 Human P37173</a>

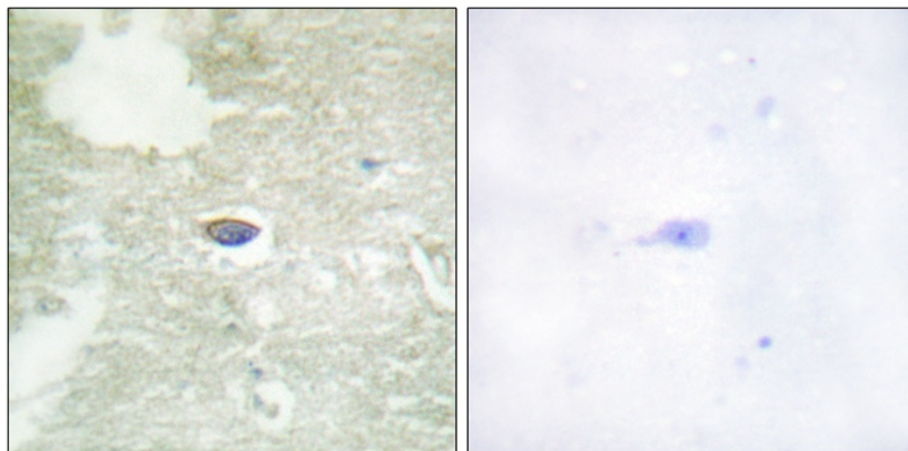


[View online »](#)

**Background:** Transmembrane serine/threonine kinase forming with the TGF-beta type I serine/threonine kinase receptor, TGFBR1, the non-promiscuous receptor for the TGF-beta cytokines TGF $\beta$ 1, TGF $\beta$ 2 and TGF $\beta$ 3. Transduces the TGF $\beta$ 1, TGF $\beta$ 2 and TGF $\beta$ 3 signal from the cell surface to the cytoplasm and is thus regulating a plethora of physiological and pathological processes including cell cycle arrest in epithelial and hematopoietic cells, control of mesenchymal cell proliferation and differentiation, wound healing, extracellular matrix production, immunosuppression and carcinogenesis.

**Synonyms:** TGF-beta receptor type-2, TGF-beta receptor type II, TGF-beta type II receptor, TbetaR-II, TGFR-2

**Product images:**



Immunohistochemical analysis of paraffin-embedded human brain tissue using TGF  $\beta$  Receptor II (Phospho-Ser225/250) Antibody (left) or the same antibody preincubated with blocking peptide (right).