

Product datasheet for **AP55727PU-S**

Integrin beta 4 (ITGB4) pTyr1510 Rabbit Polyclonal Antibody

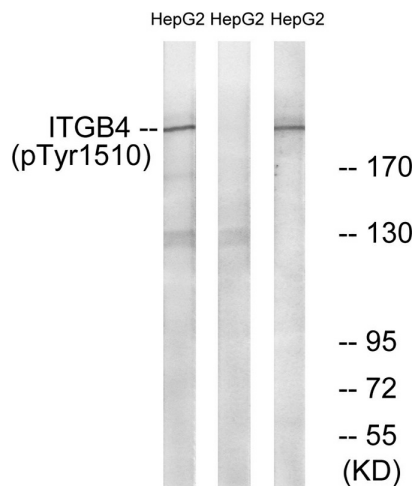
Product data:

Product Type:	Primary Antibodies
Applications:	IHC, WB
Recommended Dilution:	Western blot: 1:500~1:1000. Immunohistochemistry on paraffin sections: 1:50~1:100.
Reactivity:	Human, Mouse, Rat
Host:	Rabbit
Clonality:	Polyclonal
Immunogen:	Peptide sequence around phosphorylation site of tyrosine1510(R-D-Y(p)-S-T) derived from Human ITGB4 (KLH-conjugated)
Specificity:	The antibody detects endogenous levels of ITGB4 only when phosphorylated at tyrosine 1510.
Formulation:	Rabbit IgG in phosphate buffered saline (without Mg ²⁺ and Ca ²⁺), pH 7.4, 150mM NaCl, 0.02% sodium azide and 50% glycerol State: Aff - Purified State: Liquid Ig fraction
Concentration:	lot specific
Purification:	Affinity chromatography using epitope-specific peptide
Conjugation:	Unconjugated
Storage:	Upon receipt, store undiluted (in aliquots) at -20°C. Avoid repeated freezing and thawing.
Stability:	Shelf life: one year from despatch.
Predicted Protein Size:	202 kDa
Gene Name:	integrin subunit beta 4
Database Link:	Entrez Gene 3691 Human P16144
Background:	Integrin alpha-6/beta-4 is a receptor for laminin. Plays a critical structural role in the hemidesmosome of epithelial cells. Is required for the regulation of keratinocyte polarity and motility.
Synonyms:	ITGB4, GP150

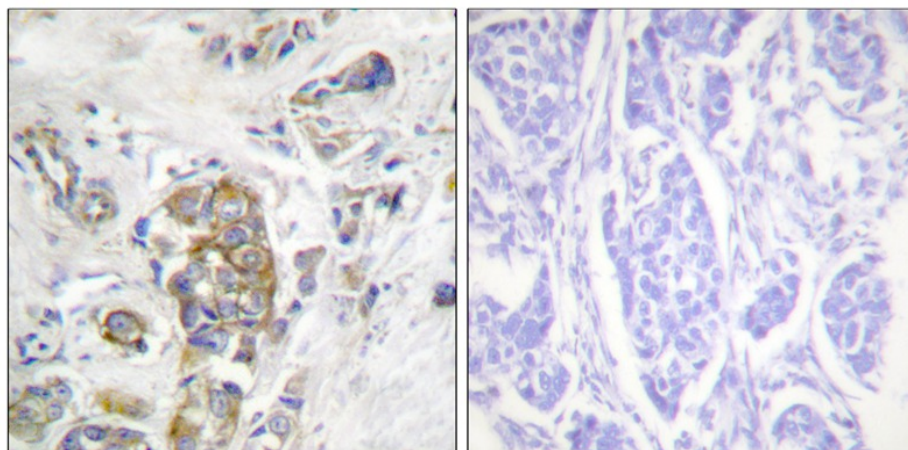


[View online »](#)

Product images:



Western blot analysis of extracts from HepG2 cells treated with Na₂VO₃ using ITGB4 (Phospho-Tyr1510) Antibody. The lane on the right is treated with the antigen-specific peptide.



Immunohistochemical analysis of paraffin-embedded human breast carcinoma tissue, using ITGB4 (Phospho-Tyr1510) Antibody (left) or the same antibody preincubated with blocking peptide (right).