

Product datasheet for **AP55726PU-N**

IL2 Receptor beta (IL2RB) pTyr364 Rabbit Polyclonal Antibody

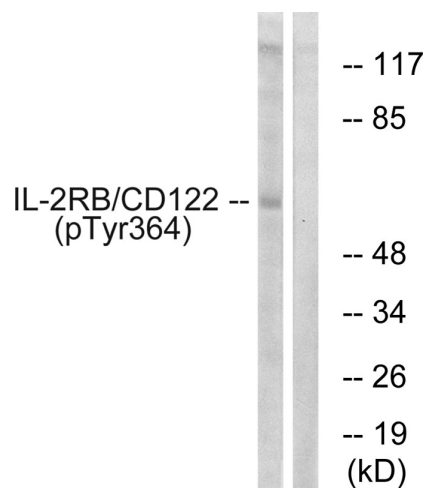
Product data:

Product Type:	Primary Antibodies
Applications:	WB
Recommended Dilution:	Western blot: 1:500~1:1000.
Reactivity:	Human, Mouse
Host:	Rabbit
Clonality:	Polyclonal
Immunogen:	Peptide sequence around phosphorylation site of tyrosine 364(Q-G-Y(p)-F-F) derived from Human IL-2R β /CD122 (KLH-conjugated)
Specificity:	The antibody detects endogenous levels of IL-2R β /CD122 only when phosphorylated at tyrosine 364.
Formulation:	Rabbit IgG in phosphate buffered saline (without Mg ²⁺ and Ca ²⁺), pH 7.4, 150mM NaCl, 0.02% sodium azide and 50% glycerol State: Aff - Purified State: Liquid Ig fraction
Concentration:	lot specific
Purification:	Affinity chromatography using epitope-specific peptide
Conjugation:	Unconjugated
Storage:	Upon receipt, store undiluted (in aliquots) at -20°C. Avoid repeated freezing and thawing.
Stability:	Shelf life: one year from despatch.
Predicted Protein Size:	75 kDa
Gene Name:	interleukin 2 receptor subunit beta
Database Link:	Entrez Gene 3560 Human P14784
Background:	Receptor for interleukin-2. This beta subunit is involved in receptor mediated endocytosis and transduces the mitogenic signals of IL2.
Synonyms:	Interleukin-2 receptor subunit beta, IL-2 receptor subunit beta, IL2 Receptor beta, P70-75



[View online »](#)

Product images:



Western blot analysis of extracts from COS7 cells using IL-2R β /CD122 (Phospho-Tyr364) Antibody. The lane on the right is treated with the antigen-specific peptide.