

Product datasheet for **AP55724PU-S**

HRH1 pSer398 Rabbit Polyclonal Antibody

Product data:

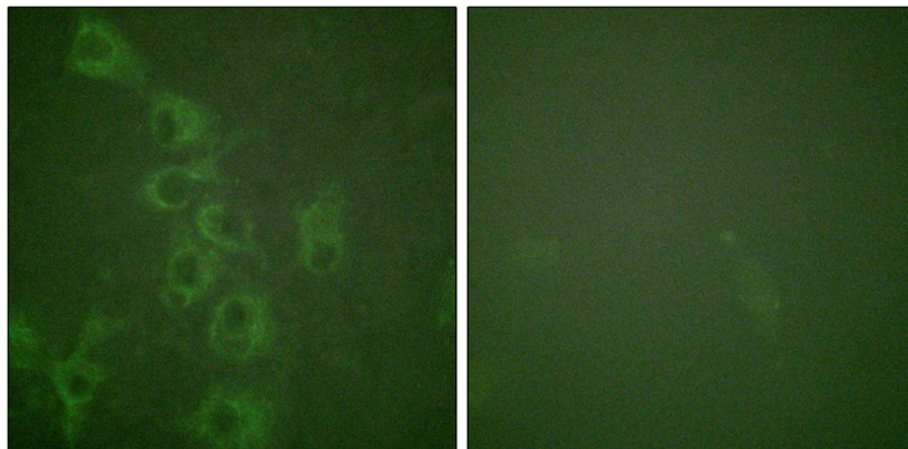
Product Type:	Primary Antibodies
Applications:	IF
Recommended Dilution:	Immunofluorescence: 1:100~1:200.
Reactivity:	Human, Mouse
Host:	Rabbit
Clonality:	Polyclonal
Immunogen:	Peptide sequence around phosphorylation site of Serine 398(S-H-S(p)-R-Q) derived from Human Histamine H1 Receptor (KLH-conjugated)
Specificity:	The antibody detects endogenous levels of Histamine H1 Receptor only when phosphorylated at serine 398.
Formulation:	Rabbit IgG in phosphate buffered saline (without Mg ²⁺ and Ca ²⁺), pH 7.4, 150mM NaCl, 0.02% sodium azide and 50% glycerol State: Aff - Purified State: Liquid Ig fraction
Concentration:	lot specific
Purification:	Affinity chromatography using epitope-specific peptide
Conjugation:	Unconjugated
Storage:	Upon receipt, store undiluted (in aliquots) at -20°C. Avoid repeated freezing and thawing.
Stability:	Shelf life: one year from despatch.
Predicted Protein Size:	55 kDa
Gene Name:	histamine receptor H1
Database Link:	Entrez Gene 3269 Human P35367
Background:	In peripheral tissues, the H1 subclass of histamine receptors mediates the contraction of smooth muscles, increase in capillary permeability due to contraction of terminal venules, and catecholamine release from adrenal medulla, as well as mediating neurotransmission in the central nervous system.



[View online »](#)

Synonyms: HRH1, HR-H1, Histamine H1 receptor

Product images:



Immunofluorescence staining of methanol-fixed HuvEc cells using Histamine H1 Receptor (Phospho-Ser398) Antibody.