

Product datasheet for **AP55723PU-S**

PRKAR2B pSer113 Rabbit Polyclonal Antibody

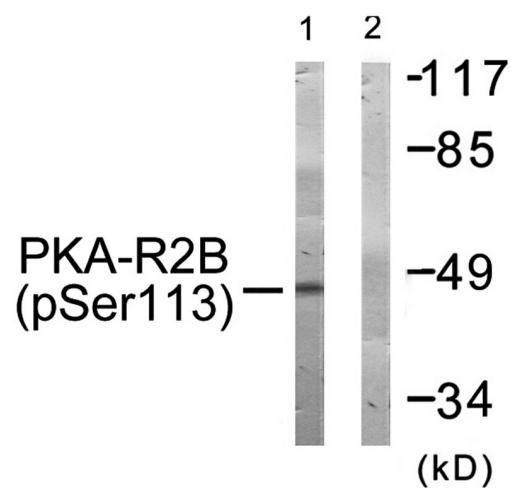
Product data:

Product Type:	Primary Antibodies
Applications:	WB
Recommended Dilution:	Western blot: 1:500~1:1000.
Reactivity:	Human, Mouse, Rat
Host:	Rabbit
Clonality:	Polyclonal
Immunogen:	Peptide sequence around phosphorylation site of Serine113(R-R-A(p)-S-V) derived from Human PKA-R2 β (KLH-conjugated)
Specificity:	The antibody detects endogenous levels of PKA-R2 β only when phosphorylated at serine 113.
Formulation:	Rabbit IgG in phosphate buffered saline (without Mg ²⁺ and Ca ²⁺), pH 7.4, 150mM NaCl, 0.02% sodium azide and 50% glycerol State: Aff - Purified State: Liquid Ig fraction
Concentration:	lot specific
Purification:	Affinity chromatography using epitope-specific peptide
Conjugation:	Unconjugated
Storage:	Upon receipt, store undiluted (in aliquots) at -20°C. Avoid repeated freezing and thawing.
Stability:	Shelf life: one year from despatch.
Predicted Protein Size:	46 kDa
Gene Name:	protein kinase cAMP-dependent type II regulatory subunit beta
Database Link:	Entrez Gene 5577 Human P31323
Background:	Regulatory subunit of the cAMP-dependent protein kinases involved in cAMP signaling in cells. Type II regulatory chains mediate membrane association by binding to anchoring proteins, including the MAP2 kinase.
Synonyms:	PRKAR2



[View online »](#)

Product images:



Western blot analysis of extracts from COS-7 cells treated with PMA using PKA-R2 β (Phospho-Ser113) Antibody. The lane on the right is treated with the antigen-specific peptide.