

Product datasheet for **AP55722PU-N**

GATA2 pSer401 Rabbit Polyclonal Antibody

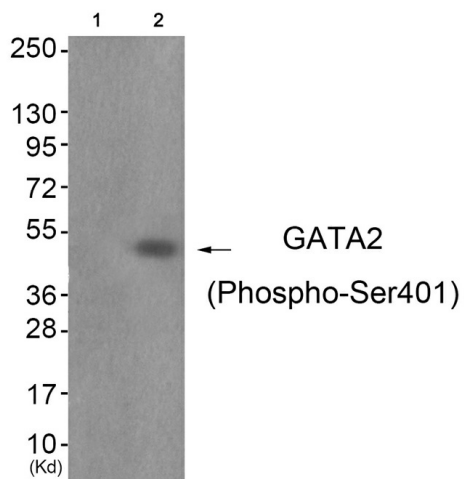
Product data:

Product Type:	Primary Antibodies
Applications:	WB
Recommended Dilution:	Western blot: 1:500~1:1000.
Reactivity:	Human, Mouse
Host:	Rabbit
Clonality:	Polyclonal
Immunogen:	Peptide sequence around phosphorylation site of Serine 401(K-M-S(p)-N-K) derived from Human GATA2 (KLH-conjugated)
Specificity:	The antibody detects endogenous levels of GATA2 only when phosphorylated at serine 401.
Formulation:	Rabbit IgG in phosphate buffered saline (without Mg ²⁺ and Ca ²⁺), pH 7.4, 150mM NaCl, 0.02% sodium azide and 50% glycerol State: Aff - Purified State: Liquid Ig fraction
Concentration:	lot specific
Purification:	Affinity chromatography using epitope-specific peptide
Conjugation:	Unconjugated
Storage:	Upon receipt, store undiluted (in aliquots) at -20°C. Avoid repeated freezing and thawing.
Stability:	Shelf life: one year from despatch.
Predicted Protein Size:	50 kDa
Gene Name:	GATA binding protein 2
Database Link:	Entrez Gene 2624 Human P23769
Background:	Transcriptional activator which regulates endothelin-1 gene expression in endothelial cells. Binds to the consensus sequence 5'-AGATAG-3'.
Synonyms:	GATA-2, GATA-binding protein 2



[View online »](#)

Product images:



Western blot analysis of extracts from JK cells (Lane 2), using GATA2 (Phospho-Ser401) Antibody. The lane on the left is treated with antigen-specific peptide.