

Product datasheet for **AP55721PU-N**

Eph receptor A2 (EPHA2) pTyr588/596 Rabbit Polyclonal Antibody

Product data:

Product Type:	Primary Antibodies
Applications:	IF, WB
Recommended Dilution:	Western blot: 1:500~1:1000. Immunofluorescence: 1:100~1:200.
Reactivity:	Human, Mouse
Host:	Rabbit
Clonality:	Polyclonal
Immunogen:	Peptide sequence around phosphorylation site of tyrosine 588/596 (K-T-Y(p)-V-R)/(R-T-Y(p)-V-D) derived from Human EPHA2/3/4 (KLH-conjugated)
Specificity:	The antibody detects endogenous levels of EPHA2/3/4 only when phosphorylated at tyrosine 588/596
Formulation:	Rabbit IgG in phosphate buffered saline (without Mg ²⁺ and Ca ²⁺), pH 7.4, 150mM NaCl, 0.02% sodium azide and 50% glycerol State: Aff - Purified State: Liquid Ig fraction
Concentration:	lot specific
Purification:	Affinity chromatography using epitope-specific peptide
Conjugation:	Unconjugated
Storage:	Upon receipt, store undiluted (in aliquots) at -20°C. Avoid repeated freezing and thawing.
Stability:	Shelf life: one year from despatch.
Predicted Protein Size:	130 kDa
Gene Name:	EPH receptor A2
Database Link:	Entrez Gene 1969 Human P29317



[View online »](#)

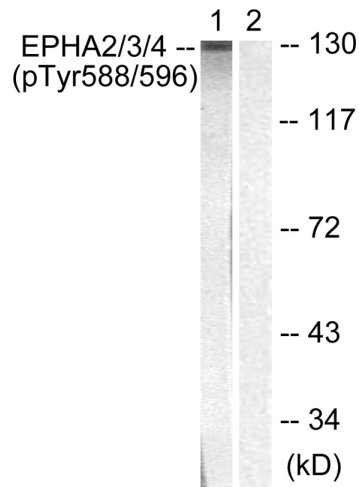
Background:

Receptor tyrosine kinase which binds promiscuously membrane-bound ephrin-A family ligands residing on adjacent cells, leading to contact-dependent bidirectional signaling into neighboring cells. The signaling pathway downstream of the receptor is referred to as forward signaling while the signaling pathway downstream of the ephrin ligand is referred to as reverse signaling. Activated by the ligand ephrin-A1/EFNA1 regulates migration, integrin-mediated adhesion, proliferation and differentiation of cells. Regulates cell adhesion and differentiation through DSG1/desmoglein-1 and inhibition of the ERK1/ERK2 (MAPK3/MAPK1, respectively) signaling pathway.

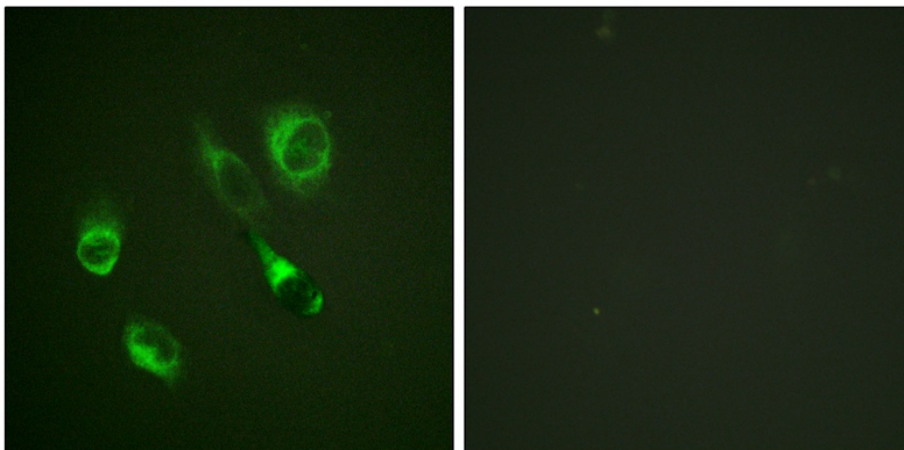
Synonyms:

ECK, Ephrin type-A receptor 2, Epithelial cell kinase, Eph receptor A2, EK4, TYRO4

Product images:



Western blot analysis of extracts from HepG2 cells using EPHA2/3/4 (Phospho-Tyr588/596) Antibody. The lane on the right is treated with the antigen-specific peptide.



Immunofluorescence staining of methanol-fixed HeLa cells using EPHA2/3/4 (Phospho-Tyr588/596) Antibody.