

Product datasheet for **AP55719PU-S**

MCSF Receptor (CSF1R) pTyr561 Rabbit Polyclonal Antibody

Product data:

Product Type:	Primary Antibodies
Applications:	IHC, WB
Recommended Dilution:	Western blot: 1:500~1:1000. Immunohistochemistry on paraffin sections: 1:50~1:100.
Reactivity:	Human, Mouse
Host:	Rabbit
Clonality:	Polyclonal
Immunogen:	Peptide sequence around phosphorylation site of tyrosine 561 (N-S-Y(p)-T-F) derived from Human CSFR (KLH-conjugated)
Specificity:	The antibody detects endogenous levels of CSFR only when phosphorylated at tyrosine 561.
Formulation:	Rabbit IgG in phosphate buffered saline (without Mg ²⁺ and Ca ²⁺), pH 7.4, 150mM NaCl, 0.02% sodium azide and 50% glycerol State: Aff - Purified State: Liquid Ig fraction
Concentration:	lot specific
Purification:	Affinity chromatography using epitope-specific peptide and KLH conjugates.
Conjugation:	Unconjugated
Storage:	Upon receipt, store undiluted (in aliquots) at -20°C. Avoid repeated freezing and thawing.
Stability:	Shelf life: one year from despatch.
Predicted Protein Size:	130 kDa
Gene Name:	colony stimulating factor 1 receptor
Database Link:	Entrez Gene 1436 Human P07333



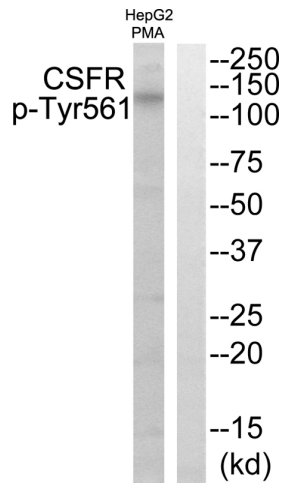
[View online »](#)

Background:

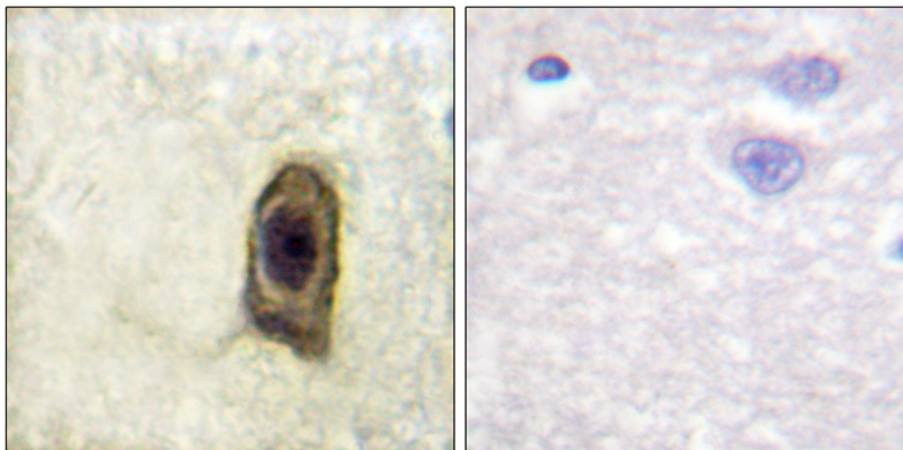
Tyrosine-protein kinase that acts as cell-surface receptor for CSF1 and IL34 and plays an essential role in the regulation of survival, proliferation and differentiation of hematopoietic precursor cells, especially mononuclear phagocytes, such as macrophages and monocytes. Promotes the release of proinflammatory chemokines in response to IL34 and CSF1, and thereby plays an important role in innate immunity and in inflammatory processes. Plays an important role in the regulation of osteoclast proliferation and differentiation, the regulation of bone resorption, and is required for normal bone and tooth development.

Synonyms:

CSF-1-R, Fms proto-oncogene, c-fms, CSF1R, FMS, Macrophage colony-stimulating factor 1 receptor

Product images:


Western blot analysis of extracts from HepG2 cells treated with PMA using CSFR (Phospho-Tyr561) Antibody. The lane on the right is treated with the antigen-specific peptide.



Immunohistochemical analysis of paraffin-embedded human brain, using CSFR (Phospho-Tyr561) Antibody (left) or the same antibody preincubated with blocking peptide (right).