

Product datasheet for **AP55717PU-S**

BAD pSer91/128 Rabbit Polyclonal Antibody

Product data:

Product Type:	Primary Antibodies
Applications:	IHC, WB
Recommended Dilution:	Western blot: 1:500~1:1000. Immunohistochemistry on paraffin sections: 1:50~1:100.
Reactivity:	Human, Mouse, Rat
Host:	Rabbit
Clonality:	Polyclonal
Immunogen:	Peptide sequence around phosphorylation site of Serine 91 (E-P-S(p)-P-F) derived from Human BAD or Serine 128 (E-P-S(p)-P-F) derived from Mouse BAD (KLH-conjugated)
Specificity:	The antibody detects endogenous levels of BAD only when phosphorylated at serine 91/serine 128.
Formulation:	Rabbit IgG in phosphate buffered saline (without Mg ²⁺ and Ca ²⁺), pH 7.4, 150mM NaCl, 0.02% sodium azide and 50% glycerol State: Aff - Purified State: Liquid Ig fraction
Concentration:	lot specific
Purification:	Affinity chromatography using epitope-specific peptide
Conjugation:	Unconjugated
Storage:	Upon receipt, store undiluted (in aliquots) at -20°C. Avoid repeated freezing and thawing.
Stability:	Shelf life: one year from despatch.
Predicted Protein Size:	22 kDa
Gene Name:	BCL2 associated agonist of cell death
Database Link:	Entrez Gene 572 Human Q92934



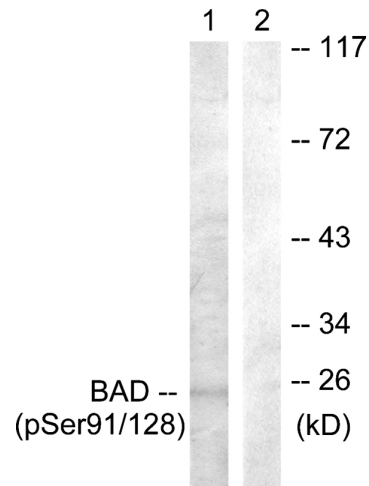
[View online »](#)

Background:

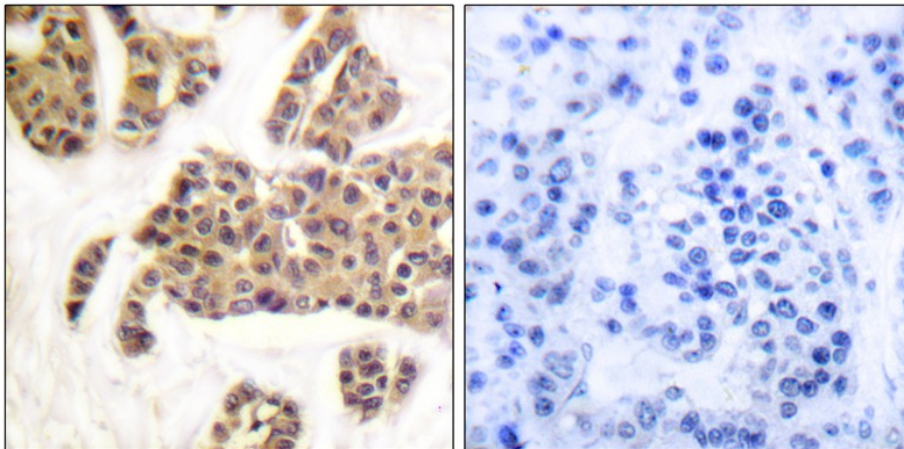
The protein encoded by BAD gene is a member of the BCL-2 family. BCL-2 family members are known to be regulators of programmed cell death. This protein positively regulates cell apoptosis by forming heterodimers with BCL-xL and BCL-2, and reversing their death repressor activity. Proapoptotic activity of this protein is regulated through its phosphorylation. Protein kinases AKT and MAP kinase, as well as protein phosphatase calcineurin were found to be involved in the regulation of this protein. Alternative splicing of this gene results in two transcript variants which encode the same isoform.

Synonyms:

BAD, BBC6, BCL2L8, Bcl-2-like protein 8, Bcl2-L-8

Product images:


Western blot analysis of extracts from COS7 cells treated with TNF-a using BAD (Phospho-Ser91/128) Antibody. The lane on the right is treated with the antigen-specific peptide.



Immunohistochemical analysis of paraffin-embedded human breast carcinoma tissue using BAD (Phospho-Ser91/128) Antibody (left) or the same antibody preincubated with blocking peptide (right).