

Product datasheet for **AP55711PU-S**

RASGRF1 pSer916 Rabbit Polyclonal Antibody

Product data:

Product Type:	Primary Antibodies
Applications:	IHC
Recommended Dilution:	Immunohistochemistry on paraffin sections: 1:50~1:100 .
Reactivity:	Mouse, Rat
Host:	Rabbit
Clonality:	Polyclonal
Immunogen:	Peptide sequence around phosphorylation site of Serine 916(N-E-G(p)-T P) derived from Human Ras-GRF1 (KLH-conjugated)
Specificity:	The antibody detects endogenous levels of Ras-GRF1 only when phosphorylated at serine 916.
Formulation:	Rabbit IgG in phosphate buffered saline (without Mg ²⁺ and Ca ²⁺), pH 7.4, 150mM NaCl, 0.02% sodium azide and 50% glycerol State: Aff - Purified State: Liquid Ig fraction
Concentration:	lot specific
Purification:	Affinity chromatography using epitope-specific peptide
Conjugation:	Unconjugated
Storage:	Upon receipt, store undiluted (in aliquots) at -20°C. Avoid repeated freezing and thawing.
Stability:	Shelf life: one year from despatch.
Predicted Protein Size:	145 kDa
Gene Name:	Ras protein specific guanine nucleotide releasing factor 1
Database Link:	Q13972



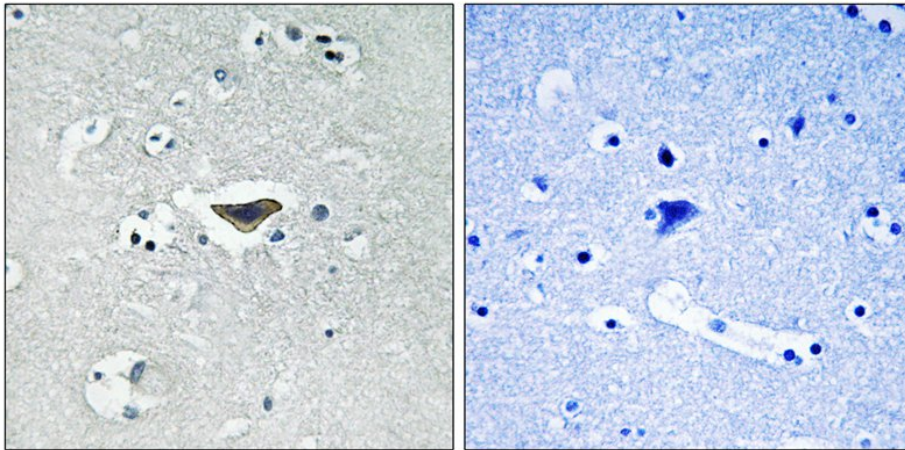
[View online »](#)

Background:

Ras activity is regulated by GAP (GTPase activating proteins) and GEFs (guanine nucleotide exchange factors). Ras-GRF1 (also known as CDC25Mm) is neuronal RasGEF and is regulated by heterotrimeric G proteins and calcium influx. Binding to calmodulin and phosphorylation stimulate Ras-GRF1 activity. Multiple PKA phosphorylation sites on Ras-GRF have been identified. Phosphorylation on the two major sites, Ser54 and Ser822, inhibits Ras-GRF activity. Carbachol (a muscarinic agonist)-induced phosphorylation on Ser916 is essential but not sufficient for maximal Ras-GRF activity.

Synonyms:

Ras-GRF1, GRF1, GNRP, CDC25

Product images:

Immunohistochemical analysis of paraffin-embedded human brain tissue using Ras-GRF1 (Phospho-Ser916) antibody (left) or the same antibody preincubated with blocking peptide (right).