

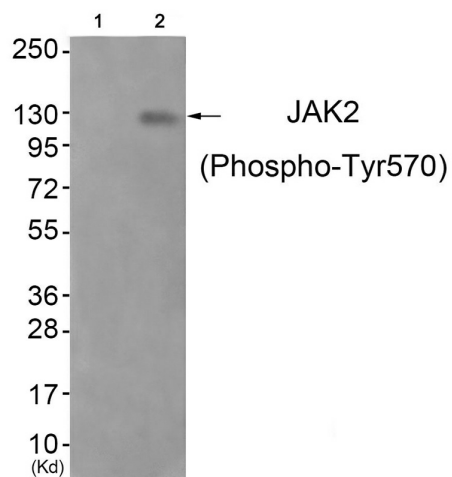
## Product datasheet for **AP55701PU-N**

### JAK2 pTyr570 Rabbit Polyclonal Antibody

#### Product data:

Product Type:	Primary Antibodies
Applications:	WB
Recommended Dilution:	Western blot: 1:500~1:1000.
Reactivity:	Human, Mouse, Rat
Host:	Rabbit
Clonality:	Polyclonal
Immunogen:	Peptide sequence around phosphorylation site of tyrosine 570(G-D-Y(p)-G-Q) derived from Human JAK2 (KLH-conjugated)
Specificity:	The antibody detects endogenous levels of JAK2 only when phosphorylated at tyrosine 750.
Formulation:	Rabbit IgG in phosphate buffered saline (without Mg <sup>2+</sup> and Ca <sup>2+</sup> ), pH 7.4, 150mM NaCl, 0.02% sodium azide and 50% glycerol State: Aff - Purified State: Liquid Ig fraction
Concentration:	lot specific
Purification:	Affinity chromatography using epitope-specific peptide
Conjugation:	Unconjugated
Storage:	Upon receipt, store undiluted (in aliquots) at -20°C. Avoid repeated freezing and thawing.
Stability:	Shelf life: one year from despatch.
Predicted Protein Size:	125 kDa
Gene Name:	Janus kinase 2
Database Link:	<a href="#">Entrez Gene 3717 Human O60674</a>
Background:	Plays a role in leptin signaling and control of body weight.
Synonyms:	Janus kinase 2, JAK-2

[View online »](#)

**Product images:**


Western blot analysis of extracts from JK cells (Lane 2), using JAK2 (Phospho-Tyr570) Antibody. The lane on the left is treated with antigen-specific peptide.