

Product datasheet for **AP55698PU-N**

Ets1 pThr38 Rabbit Polyclonal Antibody

Product data:

Product Type:	Primary Antibodies
Applications:	IF, IHC, WB
Recommended Dilution:	Western blot: 1:500~1:1000. Immunohistochemistry on paraffin sections: 1:50~1:100. Immunofluorescence: 1:100~1:200.
Reactivity:	Human, Mouse
Host:	Rabbit
Clonality:	Polyclonal
Immunogen:	Peptide sequence around phosphorylation site of threonine 38(L-L-T(p)-P-S) derived from Human ETS1 (KLH-conjugated)
Specificity:	The antibody detects endogenous levels of ETS1 only when phosphorylated at threonine 38.
Formulation:	Rabbit IgG in phosphate buffered saline (without Mg ²⁺ and Ca ²⁺), pH 7.4, 150mM NaCl, 0.02% sodium azide and 50% glycerol State: Aff - Purified State: Liquid Ig fraction
Concentration:	lot specific
Purification:	Affinity chromatography using epitope-specific peptide
Conjugation:	Unconjugated
Storage:	Upon receipt, store undiluted (in aliquots) at -20°C. Avoid repeated freezing and thawing.
Stability:	Shelf life: one year from despatch.
Predicted Protein Size:	54 kDa
Gene Name:	E26 avian leukemia oncogene 1, 5' domain
Database Link:	Entrez Gene 23871 Mouse P27577

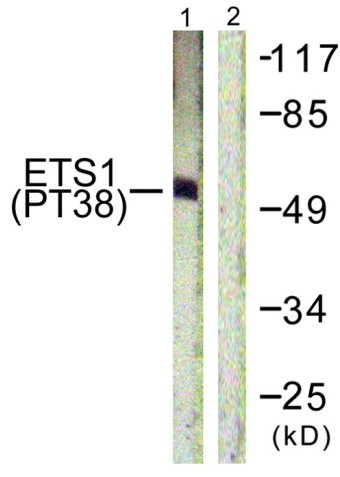


[View online »](#)

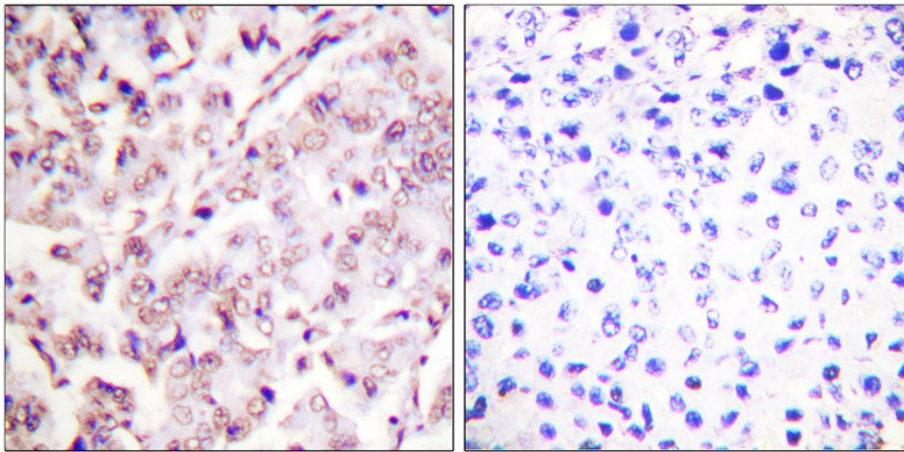
Background: Transcription factor. Directly controls the expression of cytokine and chemokine genes in a wide variety of different cellular contexts. May control the differentiation, survival and proliferation of lymphoid cells. May also regulate angiogenesis through regulation of expression of genes controlling endothelial cell migration and invasion.

Synonyms: Protein C-ets-1, EWSR2, p54

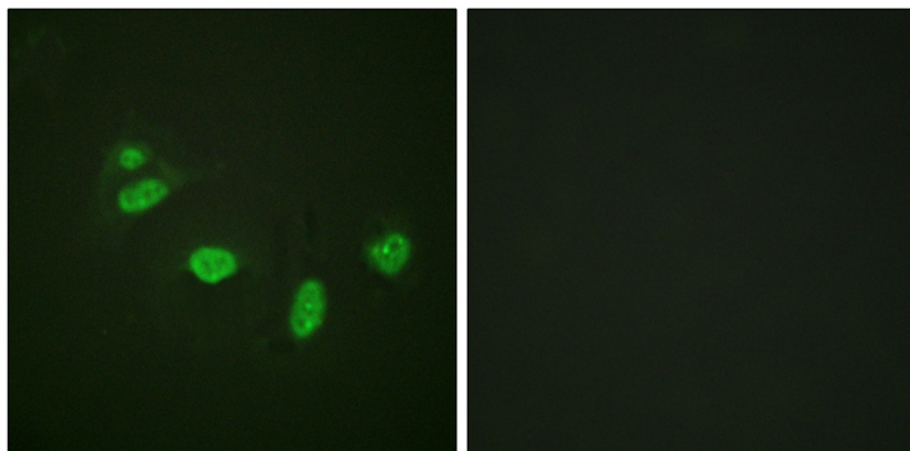
Product images:



Western blot analysis of extracts from HepG2 cells using ETS1 (Phospho-Thr38) Antibody. The lane on the right is treated with the antigen-specific peptide.



Immunohistochemical analysis of paraffin-embedded human breast carcinoma tissue, using ETS1 (Phospho-Thr38) antibody (left) or the same antibody preincubated with blocking peptide (right).



Immunofluorescence staining of methanol-fixed HeLa cells using ETS1 (Phospho-Thr38) Antibody.