

## Product datasheet for **AP55697PU-N**

### Estrogen Receptor 1 (ESR1) pTyr537 Rabbit Polyclonal Antibody

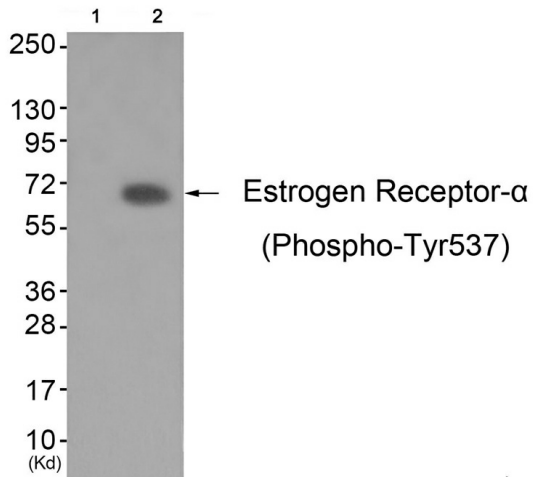
#### Product data:

Product Type:	Primary Antibodies
Applications:	IHC, WB
Recommended Dilution:	Western blot: 1:500~1:1000. Immunohistochemistry on paraffin sections: 1:50~1:100.
Reactivity:	Human, Mouse
Host:	Rabbit
Clonality:	Polyclonal
Immunogen:	Peptide sequence around phosphorylation site of tyrosine 537(P-L-Y(p)-D-L) derived from Human Estrogen Receptor- $\alpha$ (KLH-conjugated)
Specificity:	The antibody detects endogenous levels of ER- $\alpha$ only when phosphorylated at tyrosine 537.
Formulation:	Rabbit IgG in phosphate buffered saline (without Mg <sup>2+</sup> and Ca <sup>2+</sup> ), pH 7.4, 150mM NaCl, 0.02% sodium azide and 50% glycerol State: Aff - Purified State: Liquid Ig fraction
Concentration:	lot specific
Purification:	Affinity chromatography using epitope-specific peptide
Conjugation:	Unconjugated
Storage:	Upon receipt, store undiluted (in aliquots) at -20°C. Avoid repeated freezing and thawing.
Stability:	Shelf life: one year from despatch.
Predicted Protein Size:	66 kDa
Gene Name:	estrogen receptor 1
Database Link:	<a href="#">Entrez Gene 2099 Human P03372</a>
Background:	Nuclear hormone receptor. The steroid hormones and their receptors are involved in the regulation of eukaryotic gene expression and affect cellular proliferation and differentiation in target tissues.
Synonyms:	ER alpha, Estradiol receptor, ESR1, ESR, NR3A1

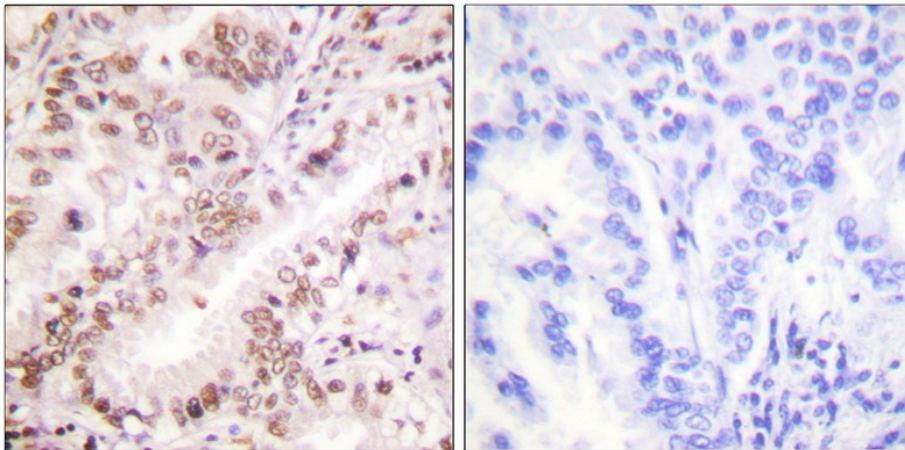


[View online »](#)

## Product images:



Western blot analysis of extracts from K562 cells (Lane 2), using Estrogen Receptor- $\alpha$  (Phospho-Tyr537) Antibody. The lane on the left is treated with antigen-specific peptide.



Immunohistochemical analysis of paraffin-embedded human lung carcinoma tissue using Estrogen Receptor- $\alpha$  (Phospho-Tyr537) antibody (left) or the same antibody preincubated with blocking peptide (right).