

Product datasheet for **AP55696PU-S**

CD247 pTyr142 Rabbit Polyclonal Antibody

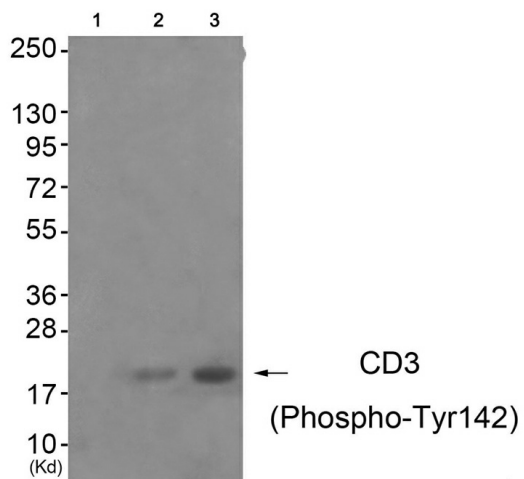
Product data:

Product Type:	Primary Antibodies
Applications:	WB
Recommended Dilution:	Western blot: 1:500~1:1000.
Reactivity:	Human, Mouse
Host:	Rabbit
Clonality:	Polyclonal
Immunogen:	Peptide sequence around phosphorylation site of tyrosine 142 (G-L-Y(p)-Q-G) derived from Human CD3 ζ (KLH-conjugated)
Specificity:	The antibody detects endogenous levels of CD3 ζ only when phosphorylated at tyrosine 142.
Formulation:	Rabbit IgG in phosphate buffered saline (without Mg ²⁺ and Ca ²⁺), pH 7.4, 150mM NaCl, 0.02% sodium azide and 50% glycerol State: Aff - Purified State: Liquid Ig fraction
Concentration:	lot specific
Purification:	Affinity chromatography using epitope-specific peptide
Conjugation:	Unconjugated
Storage:	Upon receipt, store undiluted (in aliquots) at -20°C. Avoid repeated freezing and thawing.
Stability:	Shelf life: one year from despatch.
Predicted Protein Size:	20 kDa
Gene Name:	CD247 molecule
Database Link:	Entrez Gene 919 Human P20963
Background:	Probable role in assembly and expression of the TCR complex as well as signal transduction upon antigen triggering.
Synonyms:	T3Z, TCRZ, CD3 zeta chain



[View online »](#)

Product images:



Western blot analysis of extracts from JK cells (Lane 2) and K562 cells (Lane 3), using CD3 ?¶ (Phospho-Tyr142) Antibody. The lane on the left is treated with antigen-specific peptide.