

Product datasheet for **AP55693PU-S**

CCR5 pSer349 Rabbit Polyclonal Antibody

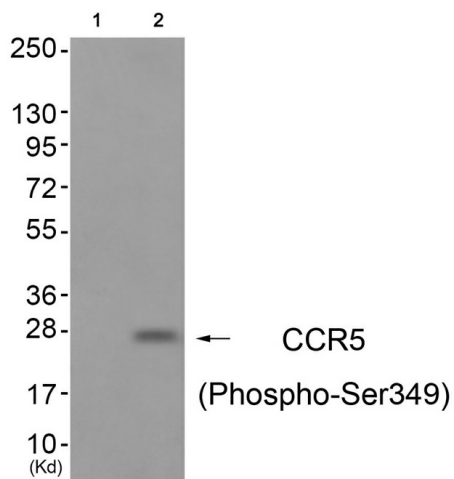
Product data:

Product Type:	Primary Antibodies
Applications:	WB
Recommended Dilution:	Western blot: 1:500~1:1000.
Reactivity:	Human
Host:	Rabbit
Clonality:	Polyclonal
Immunogen:	Peptide sequence around phosphorylation site of Serine 349 (E-I-S(p)-V-G) derived from Human CCR5 (KLH-conjugated)
Specificity:	The antibody detects endogenous levels of CCR5 only when phosphorylated at serine 349.
Formulation:	Rabbit IgG in phosphate buffered saline (without Mg ²⁺ and Ca ²⁺), pH 7.4, 150mM NaCl, 0.02% sodium azide and 50% glycerol State: Aff - Purified State: Liquid Ig fraction
Concentration:	lot specific
Purification:	Affinity chromatography using epitope-specific peptide
Conjugation:	Unconjugated
Storage:	Upon receipt, store undiluted (in aliquots) at -20°C. Avoid repeated freezing and thawing.
Stability:	Shelf life: one year from despatch.
Predicted Protein Size:	40 kDa
Gene Name:	C-C motif chemokine receptor 5 (gene/pseudogene)
Database Link:	Entrez Gene 1234 Human P51681
Background:	Receptor for a number of inflammatory CC-chemokines including MIP-1-alpha, MIP-1-beta and RANTES and subsequently transduces a signal by increasing the intracellular calcium ion level. May play a role in the control of granulocytic lineage proliferation or differentiation. Acts as a coreceptor (CD4 being the primary receptor) for HIV-1 R5 isolates.
Synonyms:	C-C chemokine receptor type 5, C-C CKR-5, CC-CKR-5, CCR-5, CMKBR5, CHEMR13



[View online »](#)

Product images:



Western blot analysis of extracts from A549 cells (Lane 2), using CCR5 (Phospho-Ser349) Antibody. The lane on the left is treated with antigen-specific peptide.