

## Product datasheet for **AP55691PU-N**

### CEBP Alpha (CEBPA) pSer21 Rabbit Polyclonal Antibody

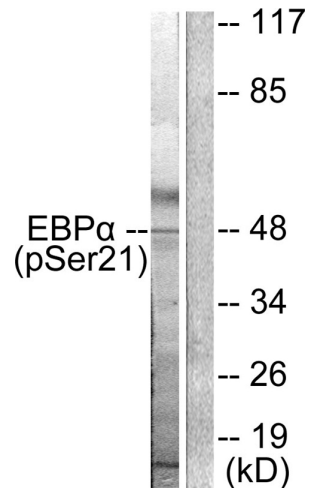
#### Product data:

Product Type:	Primary Antibodies
Applications:	IHC, WB
Recommended Dilution:	<b>Western blot:</b> 1:500~1:1000. <b>Immunohistochemistry on paraffin sections:</b> 1:50~1:100.
Reactivity:	Human, Mouse, Rat
Host:	Rabbit
Clonality:	Polyclonal
Immunogen:	Peptide sequence around phosphorylation site of Serine 21 (L-Q-S(p)-P-P) derived from Human C/EBP- $\alpha$ (KLH-conjugated)
Specificity:	The antibody detects endogenous levels of C/EBP- $\alpha$ only when phosphorylated at serine 21.
Formulation:	Rabbit IgG in phosphate buffered saline (without Mg <sup>2+</sup> and Ca <sup>2+</sup> ), pH 7.4, 150mM NaCl, 0.02% sodium azide and 50% glycerol State: Aff - Purified State: Liquid Ig fraction
Concentration:	lot specific
Purification:	Affinity chromatography using epitope-specific peptide
Conjugation:	Unconjugated
Storage:	Upon receipt, store undiluted (in aliquots) at -20°C. Avoid repeated freezing and thawing.
Stability:	Shelf life: one year from despatch.
Predicted Protein Size:	45 kDa
Gene Name:	CCAAT/enhancer binding protein alpha
Database Link:	<a href="#">Entrez Gene 1050 Human P49715</a>
Background:	C/EBP is a DNA-binding protein that recognizes two different motifs: the CCAAT homology common to many promoters and the enhanced core homology common to many enhancers.
Synonyms:	C/EBP alpha

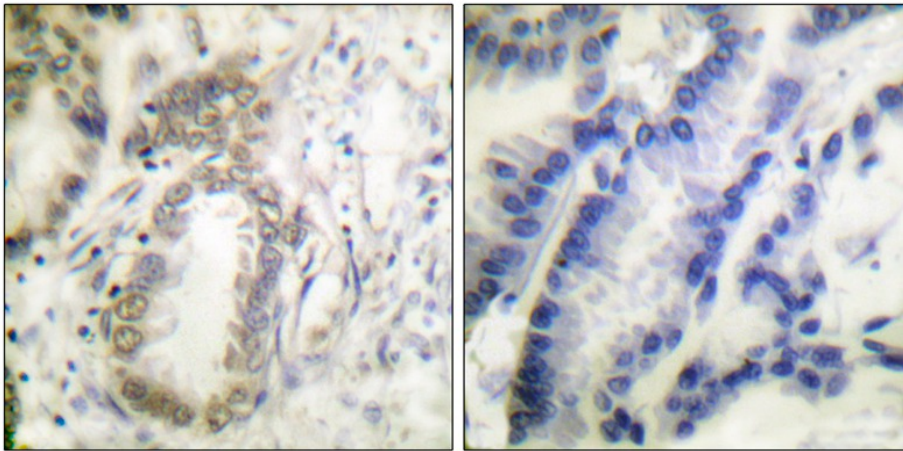


[View online »](#)

## Product images:



Western blot analysis of extracts from HepG2 cells treated with EGF using C/EBP-a (phospho-Ser21) Antibody. The lane on the right is treated with the antigen-specific peptide.



Immunohistochemical analysis of paraffin-embedded human colon carcinoma tissue using C/EBP-a (phospho-Ser21) antibody (left) or the same antibody preincubated with blocking peptide (right).