

Product datasheet for **AP55688PU-S**

Synaptotagmin 1 (SYT1) pThr202 Rabbit Polyclonal Antibody

Product data:

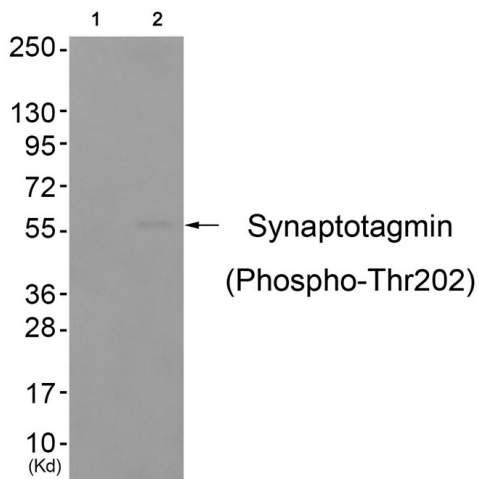
Product Type:	Primary Antibodies
Applications:	IHC, WB
Recommended Dilution:	Western blot: 1:500~1:1000. Immunohistochemistry on paraffin sections: 1:50~1:100.
Reactivity:	Human, Mouse, Rat
Host:	Rabbit
Clonality:	Polyclonal
Immunogen:	Peptide sequence around phosphorylation site of threonine 202(R-K-T(p)-L-N) derived from Human Synaptotagmin (KLH-conjugated)
Specificity:	The antibody detects endogenous levels of Synaptotagmin only when phosphorylated at threonine 202.
Formulation:	Rabbit IgG in phosphate buffered saline (without Mg ²⁺ and Ca ²⁺), pH 7.4, 150mM NaCl, 0.02% sodium azide and 50% glycerol State: Aff - Purified State: Liquid Ig fraction
Concentration:	lot specific
Purification:	Affinity chromatography using epitope-specific peptide
Conjugation:	Unconjugated
Storage:	Upon receipt, store undiluted (in aliquots) at -20°C. Avoid repeated freezing and thawing.
Stability:	Shelf life: one year from despatch.
Predicted Protein Size:	60 kDa
Gene Name:	synaptotagmin 1
Database Link:	Entrez Gene 6857 Human P21579
Background:	The synaptotagmins are integral membrane proteins of synaptic vesicles thought to serve as Ca ²⁺ sensors in the process of vesicular trafficking and exocytosis. Calcium binding to synaptotagmin I participates in triggering neurotransmitter release at the synapse.



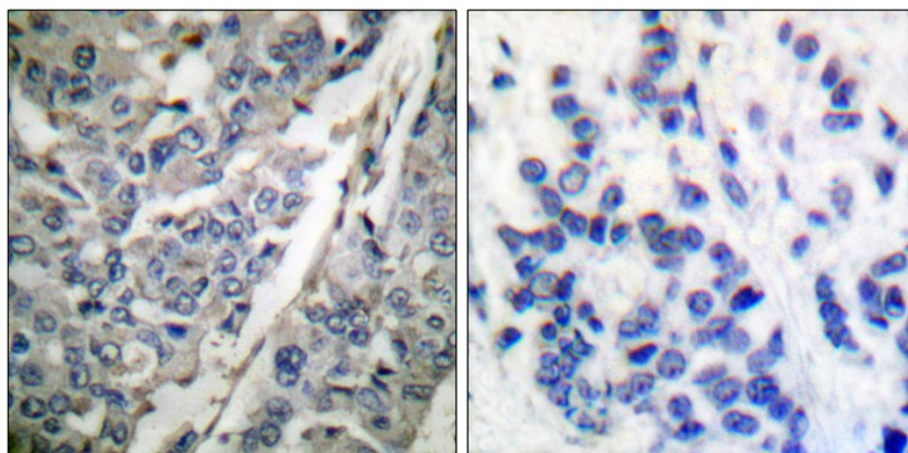
[View online »](#)

Synonyms: SYT1, SVP65, SYT, Synaptotagmin1, Synaptotagmin I, SytI, p65

Product images:



Western blot analysis of extracts from colo cells (Lane 2), using Synaptotagmin (Phospho-Thr202) Antibody. The lane on the left is treated with antigen-specific peptide.



Immunohistochemical analysis of paraffin-embedded human breast carcinoma tissue using Synaptotagmin (phospho-Thr202) antibody (left) or the same antibody preincubated with blocking peptide (right).