

Product datasheet for **AP55686PU-S**

Amyloid Precursor Protein (APP) pThr743/668 Rabbit Polyclonal Antibody

Product data:

Product Type:	Primary Antibodies
Applications:	IF, IHC, WB
Recommended Dilution:	Western blot: 1:500~1:1000. Immunohistochemistry on paraffin sections: 1:50~1:100. Immunofluorescence: 1:100~1:200.
Reactivity:	Human, Mouse, Rat
Host:	Rabbit
Clonality:	Polyclonal
Immunogen:	Peptide sequence around phosphorylation site of threonine743 /668 (A-V-T(p)-P-E) derived from Human Amyloid β A4 (KLH-conjugated)
Specificity:	The antibody detects endogenous levels of Amyloid β A4 only when phosphorylated at threonine 743/668.
Formulation:	Rabbit IgG in phosphate buffered saline (without Mg ²⁺ and Ca ²⁺), pH 7.4, 150mM NaCl, 0.02% sodium azide and 50% glycerol State: Aff - Purified State: Liquid Ig fraction
Concentration:	lot specific
Purification:	Affinity chromatography using epitope-specific peptide
Conjugation:	Unconjugated
Storage:	Upon receipt, store undiluted (in aliquots) at -20°C. Avoid repeated freezing and thawing.
Stability:	Shelf life: one year from despatch.
Predicted Protein Size:	140 kDa
Gene Name:	amyloid beta precursor protein
Database Link:	Entrez Gene 351 Human P05067



[View online »](#)

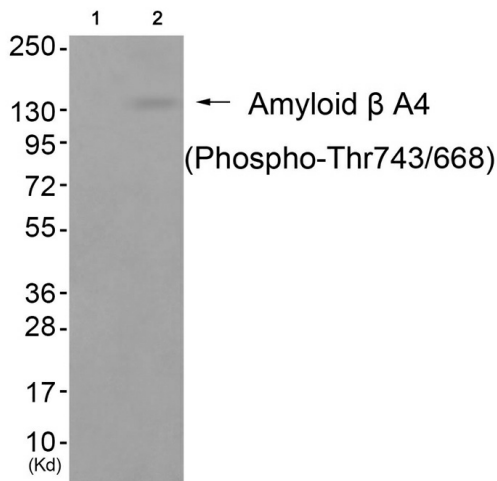
Background:

Functions as a cell surface receptor and performs physiological functions on the surface of neurons relevant to neurite growth, neuronal adhesion and axonogenesis. Involved in cell mobility and transcription regulation through protein-protein interactions. Can promote transcription activation through binding to APBB1-KAT5 and inhibits Notch signaling through interaction with Numb. Couples to apoptosis-inducing pathways such as those mediated by G(O) and JIP. Inhibits G(o) alpha ATPase activity By similarity. Acts as a kinesin I membrane receptor, mediating the axonal transport of beta-secretase and presenilin 1.

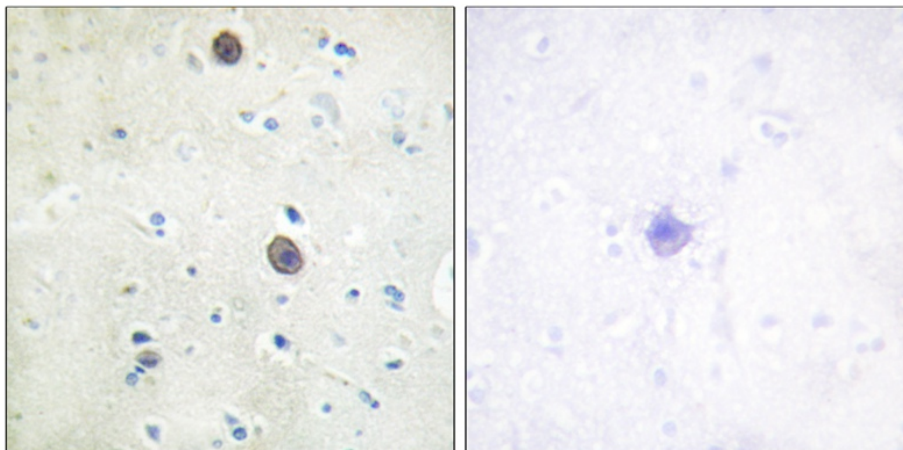
Synonyms:

Alzheimer disease amyloid protein, Amyloid Precursor Protein, ABPP, APPI, PreA4, Cerebral vascular amyloid peptide, CVAP

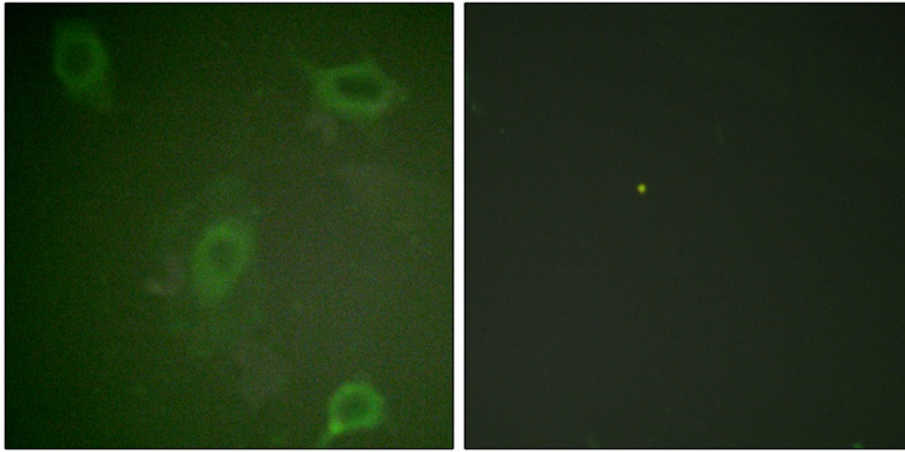
Product images:



Western blot analysis of extracts from cos-7 cells (Lane 2), using Amyloid β A4 (Phospho-Thr743/668) Antibody. The lane on the left is treated with antigen-specific peptide.



Immunohistochemical analysis of paraffin-embedded human brain tissue using Amyloid β A4 (phospho-Thr743/668) antibody (left) or the same antibody preincubated with blocking peptide (right).



Immunofluorescence staining of methanol-fixed HeLa cells using Amyloid β A4 (phospho-Thr743/668) Antibody.