

Product datasheet for **AP55682PU-N**

FGF11 (1-30) Rabbit Polyclonal Antibody

Product data:

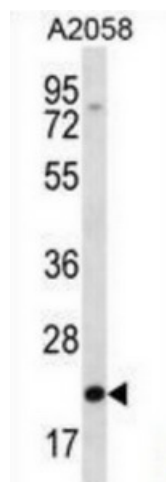
Product Type:	Primary Antibodies
Applications:	FC, IHC, WB
Recommended Dilution:	Flow Cytometry: 1/10 - 1/50. Immunohistochemistry on Paraffin Sections: 1/10 - 1/50. Western Blot: 1/1000.
Reactivity:	Human
Host:	Rabbit
Clonality:	Polyclonal
Immunogen:	KLH-conjugated synthetic peptide from N-terminal region of Human FGF11. Epitope: 1-30
Specificity:	Recognizes Human FGF11 / FGF-11. Other species not tested.
Formulation:	PBS State: Aff - Purified State: Liquid purified IgG fraction Preservative: 0.09% Sodium Azide
Purification:	Immunoaffinity Chromatography
Conjugation:	Unconjugated
Storage:	Store undiluted at 2-8°C for one month or (in aliquots) at -20°C for longer. Avoid repeated freezing and thawing.
Stability:	Shelf life: one year from despatch.
Gene Name:	fibroblast growth factor 11
Database Link:	Entrez Gene 2256 Human Q92914
Background:	The protein encoded by this gene is a member of the fibroblast growth factor (FGF) family. FGF family members possess broad mitogenic and cell survival activities, and are involved in a variety of biological processes, including embryonic development, cell growth, morphogenesis, tissue repair, tumor growth and invasion. The function of this gene has not yet been determined. The expression pattern of the mouse homolog implies a role in nervous system development.



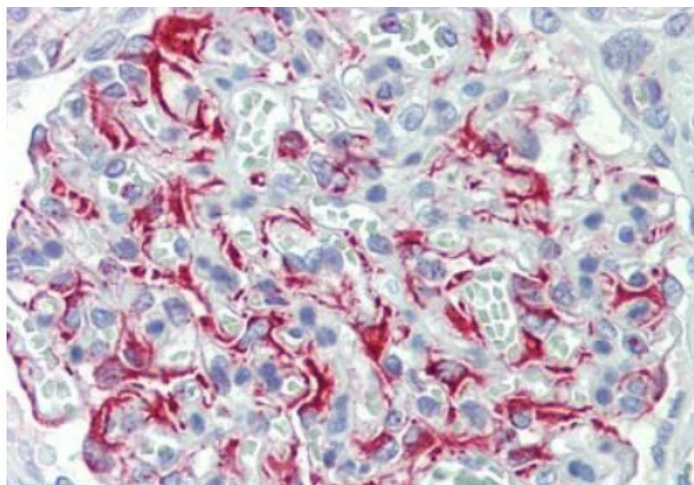
[View online »](#)

Synonyms: Fibroblast growth factor 11, FHF3

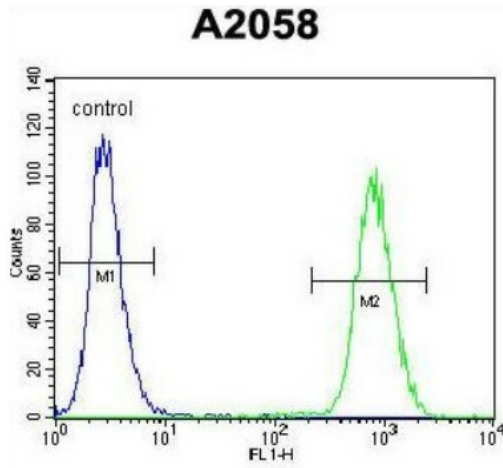
Product images:



Western blot of A2058 cell line lysates using FGF11 Antibody (N-term) Cat.-No [AP55628PU-N] (35 ug/lane). This demonstrates the FGF11 antibody detected the FGF11 protein (arrow).



Formalin-Fixed, Paraffin-Embedded Human Kidney stained with FGF11 Antibody (N-term) Cat.-No [AP55628PU-N]



Flow Cytometry of A2058 cells using FGF11 Antibody (N-term) Cat.-No [AP55628PU-N] (right histogram) compared to a negative control cell (left histogram). FITC-conjugated goat-anti-rabbit secondary antibodies were used for the analysis.