

Product datasheet for **AP55679PU-N**

PI 3 Kinase catalytic subunit gamma (PIK3CG) Rabbit Polyclonal Antibody

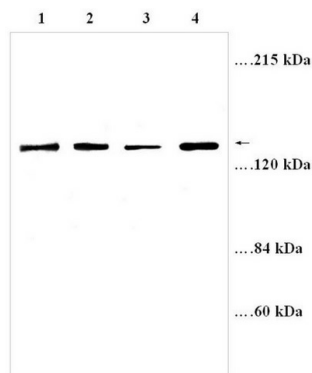
Product data:

Product Type:	Primary Antibodies
Applications:	IHC, WB
Recommended Dilution:	Immunohistochemistry on Paraffin Sections: 5 µg/ml. Western Blot: 1/2000.
Reactivity:	Human
Host:	Rabbit
Isotype:	IgG
Clonality:	Polyclonal
Immunogen:	Synthetic peptide derived from Human PI3K.
Specificity:	This Polyclonal antibody is directed against Human PI3K protein. Expect reactivity with Human PI3K. Cross-reactivity with PI3K from other sources has not been determined.
Formulation:	PBS, pH 7.4 State: Aff - Purified State: Liquid purified IgG fraction from Serum Preservative: 0.02% Sodium Azide
Concentration:	lot specific
Purification:	Affinity Chromatography on Protein A
Conjugation:	Unconjugated
Storage:	Upon receipt, store undiluted (in aliquots) at -20°C. Avoid repeated freezing and thawing.
Stability:	Shelf life: one year from despatch.
Gene Name:	phosphatidylinositol-4,5-bisphosphate 3-kinase catalytic subunit gamma
Database Link:	Entrez Gene 5294 Human P48736
Synonyms:	PI3-kinase subunit gamma, PI3K-gamma, p120-PI3K



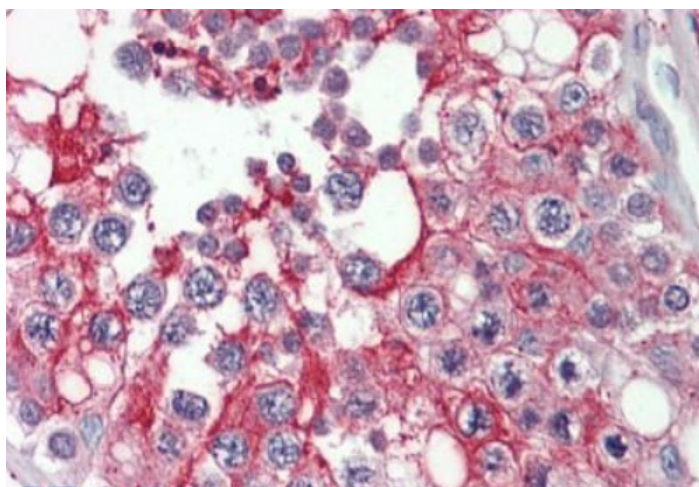
[View online »](#)

Product images:



Lane 1: ECL cell lysate(40 µg)
 Lane 2: ECL cell lysate(50 µg)
 Lane 3: SGC-7901 cell lysate(30 µg)
 Lane 4: SGC-7901 cell lysate(50 µg)
 PI 3K γ 126 kDa

Western Blot analysis using PIK3CG Antibody



Formalin-Fixed, Paraffin-Embedded Human Testis stained with PIK3CG Antibody