

Product datasheet for **AP55379PU-N**

Slc17a7 Rabbit Polyclonal Antibody

Product data:

Product Type:	Primary Antibodies
Applications:	ELISA, EM, IHC, WB
Recommended Dilution:	ELISA. RIA: 1/500 Western Blot: 1/500. Electron Microscopy: 1/200. Immunohistochemistry.
Reactivity:	Rat
Host:	Rabbit
Clonality:	Polyclonal
Immunogen:	A 17 residue synthetic peptide derived from C-terminal domain of Rat VGLUT1.
Specificity:	This antibody reacts with Rat 55-60 kDa VGLUT1 protein of BON cells stably expressing VGLUT1 and of total Rat brain extracts. No cross reactivity was detected with VGLUT2 and VGLUT3.
Formulation:	0.1M Tris, 0.1 M Glycine, 2% Sucrose State: Aff - Purified State: Lyophilized purified IgG fraction Preservative: None
Reconstitution Method:	Restore in distilled water.
Purification:	Affinity Chromatography on Protein A
Conjugation:	Unconjugated
Storage:	Store lyophilized at 2-8°C for 6 months or at -20°C long term. After reconstitution store the antibody undiluted at 2-8°C for one month or (in aliquots) at -20°C long term. Avoid repeated freezing and thawing.
Stability:	Shelf life: one year from despatch.
Gene Name:	solute carrier family 17 member 7
Database Link:	Entrez Gene 116638 Rat Q62634



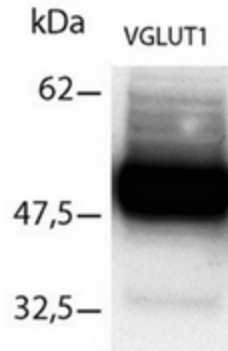
[View online »](#)

Background:

VGLUT1 is expressed in a subset of glutamate neurons and transports glutamate into native synaptic vesicles from the brain, exhibiting a conductance for chloride that is blocked by glutamate. Vesicular glutamate transport has a substantially lower apparent affinity than the plasma membrane excitatory amino acid transporters. Glutamate transport by VGLUT1 is saturated with a $K(m)$ of approximately 2 mM, in the same range as transport by synaptic vesicles. Finally, plasma membrane glutamate transporters recognize both aspartate and glutamate as substrates, whereas VGLUT1 does not recognize aspartate.

Synonyms:

Vesicular glutamate transporter 1, BNPI

Product images:

Western Blot using Immunopurified VGLUT1 antibody