

Product datasheet for **AP55378SU-N**

Slc17a8 Rabbit Polyclonal Antibody

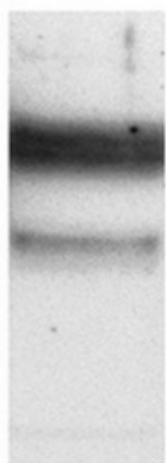
Product data:

Product Type:	Primary Antibodies
Applications:	ELISA, EM, IHC, WB
Recommended Dilution:	ELISA. Electron microscopy: 1/5000. Immuno-autoradiography : 1/5000. Immunohistochemistry: 1/5000. Western Blot: 1/2000.
Reactivity:	Rat
Host:	Rabbit
Clonality:	Polyclonal
Immunogen:	A 16 residue synthetic peptide derived from C-terminal domain of rat Vesicular Glutamate Transporter type 3 (MW: 60-62kD)
Specificity:	This antibody reacts with 60-62 kD Slc17a8 protein. Not cross reacts with VGLUT1 and VGLUT2.
Formulation:	State: Serum State: Lyophilized serum
Reconstitution Method:	Restore in distilled water.
Conjugation:	Unconjugated
Storage:	Prior to reconstitution store at -20°C. Following reconstitution store undiluted at 2-8°C for one month or (in aliquots) at -20°C for longer. Avoid repeated freezing and thawing.
Stability:	Shelf life: one year from despatch.
Gene Name:	solute carrier family 17 member 8
Database Link:	Entrez Gene 266767 Rat Q7TSF2
Synonyms:	Vesicular glutamate transporter 3



[View online »](#)

Product images:



Cell lysate from rat