

Product datasheet for **AP55360PU-N**

Twist (TWIST1) Rabbit Polyclonal Antibody

Product data:

Product Type:	Primary Antibodies
Applications:	ELISA, IHC, WB
Recommended Dilution:	ELISA. Western Blot: 1/1000-1/5000. Immunohistochemistry: 1/100-1/1000.
Reactivity:	Human
Host:	Rabbit
Clonality:	Polyclonal
Immunogen:	Synthetic peptide derived from N-terminal domain of Human Twist-1 protein
Specificity:	This antibody reacts with Human 21 kDa TWIST1 protein. It Does not cross reacts with Twist-2.
Formulation:	0.1M Tris, 0.1M Glycine and 2% Sucrose State: Purified State: Lyophilized purified antibody Preservative: None
Reconstitution Method:	Restore in distilled water.
Purification:	Affinity Chromatography on Protein A
Conjugation:	Unconjugated
Storage:	Prior to reconstitution store the antibody at -20°C. Store reconstituted antibody at 2-8°C for one month or (in aliquots) at -20°C for longer Avoid repeated freezing and thawing.
Stability:	Shelf life: one year from despatch.
Gene Name:	twist family bHLH transcription factor 1
Database Link:	Entrez Gene 7291 Human Q15672

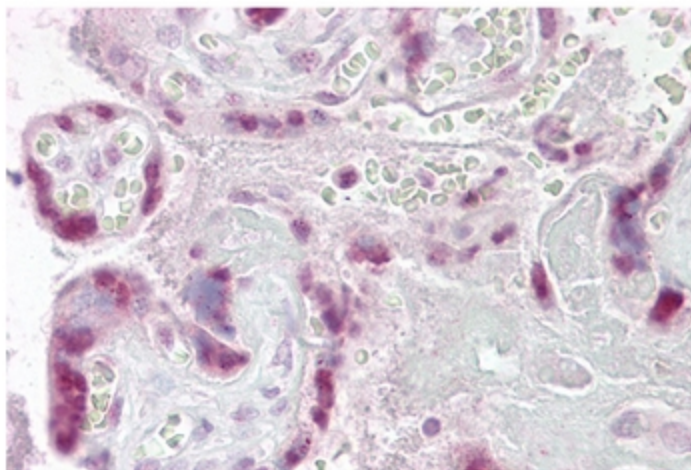


[View online »](#)

Background: Basic helix-loop-helix (bHLH) transcription factors have been implicated in cell lineage determination and differentiation. TWIST1 is a bHLH transcription factor and shares similarity with another bHLH transcription factor, Dermo1. The strongest expression of this mRNA is in placental tissue, in adults, mesodermally derived tissues express this mRNA preferentially. Mutations in this gene have been found in patients with Saethre-Chotzen syndrome.

Synonyms: Twist-related protein 1, TWIST, BHLHA38

Product images:



Placenta stained by Twist-1 antibody Cat.-No AP55360PU-N in Immunohistochemistry on Paraffin Sections