

Product datasheet for **AP55353SU-N**

TMPRSS3 Rabbit Polyclonal Antibody

Product data:

Product Type:	Primary Antibodies
Applications:	ELISA, IF, IHC, WB
Recommended Dilution:	ELISA. Western Blot: 1/500-1/2000. Immunohistochemistry: 1/100-1/500 (Immunopurified antibody is recommended).
Reactivity:	Human
Host:	Rabbit
Clonality:	Polyclonal
Immunogen:	A 15 residue synthetic peptide derived from specific domain of Human TMPRSS3 protein
Specificity:	Reacts with Human 49 kDa TMPRSS3 protein.
Formulation:	State: Serum State: Lyophilized serum Preservative: None
Reconstitution Method:	Restore in distilled water.
Conjugation:	Unconjugated
Storage:	Store lyophilized at 2-8°C for 6 months or at -20°C long term. After reconstitution store the antibody undiluted at 2-8°C for one month or (in aliquots) at -20°C long term. Avoid repeated freezing and thawing.
Stability:	Shelf life: one year from despatch.
Gene Name:	transmembrane protease, serine 3
Database Link:	Entrez Gene 64699 Human P57727



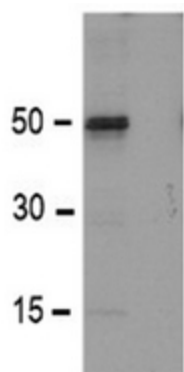
[View online »](#)

Background:

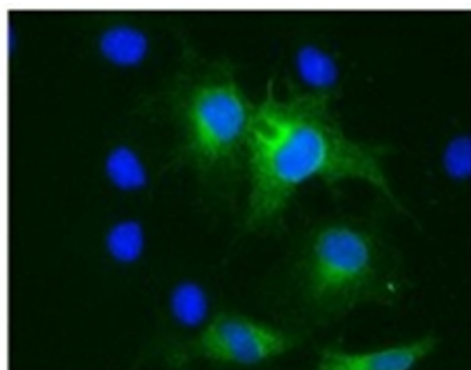
TMPRSS3 is a 437 amino acid membrane bound serine protease and a member of the S1 peptidase family. TMPRSS3 contains an amino-terminal signal anchor sequence and a glycosylated extracellular region containing the serine protease domain. Two novel missense mutations of TMPRSS3, W251C and P404L, alter the highly conserved amino acids of the serine protease domain. TMPRSS3 is expressed in many tissues, including fetal cochlea, a subset of pancreatic cancer and various other cancer tissues. TMPRSS3 is also overexpressed in cancer, suggesting that it may be important for processes in metastasis formation and tumor invasion.

Synonyms:

Transmembrane protease serine 3, ECHOS1, TADG12, TADG-12

Product images:

Western blot analysis using TMPRSS3 purified antibody: Lane 1: Total extract from 293T transfected with pHATMPRSS3. Lane 2: Total extract from 293T transfected with pHA.



Immunofluorescence of COS cells transfected with pHATMPRSS3