

Product datasheet for **AP55310PU-N**

SNAP23 Rabbit Polyclonal Antibody

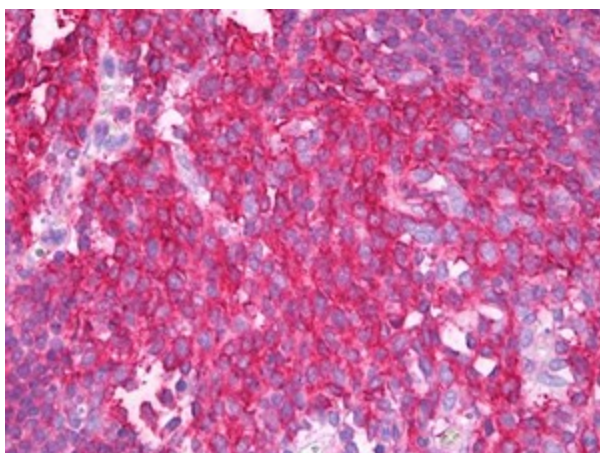
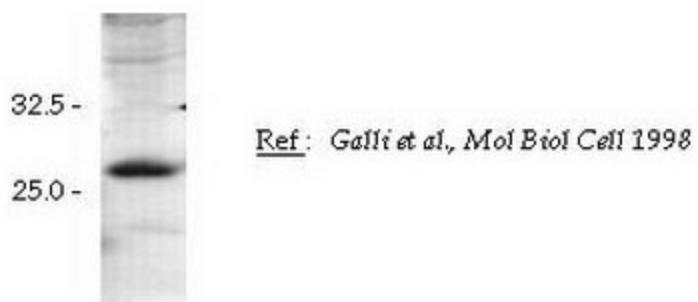
Product data:

Product Type:	Primary Antibodies
Applications:	ELISA, IF, IHC, WB
Recommended Dilution:	ELISA. Immunofluorescence: 1/50. Immunohistochemistry: 1/50 - 1/200. Western Blot: 1/250 - 1/1000.
Reactivity:	Human
Host:	Rabbit
Clonality:	Polyclonal
Immunogen:	SNAP23-GST fusion protein
Specificity:	This antibody reacts with 27 kDa SNAP23 protein.
Formulation:	0.1M Tris, 0.1M Glycine and 2% Sucrose State: Purified State: Lyophilized purified powder
Reconstitution Method:	Restore in distilled water.
Concentration:	lot specific
Conjugation:	Unconjugated
Storage:	Prior to reconstitution store at -20°C. Following reconstitution store undiluted at 2-8°C for one month or (in aliquots) at -20°C for longer. Avoid repeated freezing and thawing.
Stability:	Shelf life: one year from despatch.
Gene Name:	synaptosome associated protein 23kDa
Database Link:	Entrez Gene 8773 Human O00161
Synonyms:	SNAP-23



[View online »](#)

Product images:



Tonsil stained in IHC-P with SNAP23 antibody